

Volume 42 Number 03

March 2024

# LEAVERITE NEWS

Grand Junction Gem and Mineral Club  
2328 Monument Road P.O. Box 953  
Grand Junction, CO 81502

## *President's Message*

Hello to the GJGMC!

I think we have survived the winter. What do you think? I admit to being on guard against the cold, dark days of January. It is getting into the 60's lately, and hopefully, spring is coming.

February was a great month for the club. On Feb 8<sup>th</sup>, we watched an interesting presentation on the Mary Murphy mine. Thank you, Linda Dunham, for decorating the clubhouse for Valentine's Day. On Feb 15<sup>th</sup>, 24 people met at the clubhouse to plan field trips for the coming year – I will have more to say about that below. On Feb 22<sup>nd</sup>, we had a wonderful Chili Cookoff. Thom and Kathy's Home-Grown Chili was voted #3. June and Rob's Elk Chilienti Chili was voted #2. And Michael and Louise's Smoked Pork and Tomatillo Chili was voted #1. But there were so many competitors, who could sample them all? Not me! I thought they were all delicious, and everyone seemed to have a good time. Also in February, Grete taught a Fast Track to Lapidary class, and JoAnn taught a Basic Silversmithing class. Thank you to Grete and JoAnn for doing that. And Thank you for the Shop Stewards that enable our Open Shop sessions on Wednesdays and Saturdays.

On February 14<sup>th</sup>, Chris Henderson passed away. He has been a club member since at least 1996. I remember he was always very good at mineral identification, and he also liked florescent rocks. Chris will be missed.

Please be on the lookout for these new members that joined us in February:

Orion and Mercedes Love,  
John and Kathy Ludlum,  
Mark and Maggie Mills,  
Michele Thiebaud

On **March 14<sup>th</sup>** at our regular club meeting, we will have a presentation on what gives Color In Minerals. On **March 28<sup>th</sup>**, we will have a presentation on Yellow Cat Redwood that was collected near Moab Utah. Some of the more experienced members might remember seeing this presentation before, but we have a lot of new members who have never seen it, and people have asked me to show it again. It will help prepare us for a Moab field trip in April. On **Saturday, March 30<sup>th</sup>**, please join us if you can for a little Spring Cleaning. It would be ideal if we could trim some of the bushes outside (especially any dead branches), trim grass with some weed wackers, and hopefully straighten up the cleaning closet too. Those things will get us in good shape for the **April 13<sup>th</sup> Craft Fair**.

If you haven't renewed your 2024 membership, I hope you will consider doing that. Non-renewed memberships will be inactivated on March 31<sup>st</sup>. We would like to keep you around!

If you would be interested in one of our volunteer opportunities, Scott can still use help planning advertising for the fall rock show. And I can use help planning future programs for our club meetings.

As mentioned above, on Feb 15<sup>th</sup>, 24 members suggested going on a full schedule of field trips. We identified a time of year when the climate should be tolerable for each location. We identified a volunteer who will be leading each trip, except for 1 trip to the Henry Mountains. If someone would be willing to recommend where we can go in the Henries, preferably someone who has been there before, thank you because we will depend on that. I organized them into the list shown below. Most of the dates are shown with a question mark while they are pending arrangements from other people, like the mine or property owners, and of course the trip leader's schedule. Final details will be posted as a Meetup announcement when we know the details better. Hopefully, you will find the proposed schedule of field trips helpful as you plan your coming year.

Best wishes to always have an empty bucket ready when you go on a field trip!  
Steve, GJGMC President 2024

### **Tentatively planned Rockhounding field trips.**

The exact dates are pending in many cases, and hopefully, these dates are close.

Possible Field Trip Dates	Field Trip Length	Trip Leader	Description
March 9 <sup>th</sup>	1 Day	Bev	Kid's Club outing to Floy Wash
April 20??	Multi-day	?	Henry Mountains, Petrified Wood, and Fossils (13 votes) We need a volunteer to lead this trip.
April 27?	Daytrip	Deidre	Moab Agates
May 4?	Daytrip	Melissa	Book Cliffs Barite
May 11??	Daytrip	Deidre	Cashin Mine, near La Sal and Bedrock, if it can be arranged.
May 19-23	Multi-day	Mark	Trilobites near Delta, Utah, (17 votes) and/or Dugway geode beds and/or Topaz Mtn. Camping trip.
June 1?	Daytrip	Steve and Deidre	Floy wash red agate, and/or maybe Drilling Tour (If Deidre can arrange) and/or Sharks Teeth (Steve will ask JR for a map to sharks teeth.)
June 15?	Daytrip	Steve	La Sal fossils. Steve is asking Brad and Bambi Harmon to sketch a map of this location.
June 29?	Daytrip	Mark	Douglas Pass, leaf and bug fossils
July 13?	Multi-day	Barbara	Florissant Fossil Bed Nat Park visit, (13 votes) and next door private quarry, and maybe visit LGMC Queen Bee claim near Bailey or maybe visit a Joe Dorris Topaz claim
Aug 24?	Multi-day	Deidre	Cross Mountain Gold Mine Tour in Nederland, and South Platte prospecting. (10 votes)
Sep 7?	Daytrip	Pam	Crystal Geyser, and red snails
Sep 28?	Daytrip	Steve	Seniorita Mine, north of Ouray, azurite and malachite

### Specimens to be auctioned

Harold Epple of Fruita, CO joined the GJGMC in 1996 and passed away in September 2023. His wife has donated some of the specimens from his rock collection to the club. Some are on display in one of the cases in our hospitality room. Some shown below will be auctioned off at 1 per meeting starting with the Mar 14<sup>th</sup> meeting, if you would be interested.



## *SECRETARY'S CORNER*

**This section is dedicated to our new members. Welcome aboard!!**

Please join our club Meetup group for the most current announcements. Go to Meetup.com. Search for Grand Junction Gem and Mineral Club. There are two groups. The group with our logo (the blue pickax) is the one for paid members only. This is where Field Trip RSVPs are registered, classes are announced, and club speakers are scheduled with the details for how to connect remotely from Zoom (if preferred). For help joining Meetup, call Steve Cable, our current president. If you have any questions, please don't hesitate to contact any board member or instructor. We are excited to have you in our club and look forward to seeing you at our events, classes, and trips. <https://www.meetup.com/Grand-Junction-Gem-and-Mineral-Club-Members/>

**Recent Events:**

Cookie Meeting – February 8<sup>th</sup>, Presentation on the Mary Murphy Mine  
Field Trip Planning – February 15<sup>th</sup>  
General Meeting – February 22<sup>nd</sup>, Chili Cook-off and General Meeting

**Member Notes:**

Chris Henderson passed away on Valentine’s Day in the evening. He was at home with his family. He will be missed.  
Kathy is recovering from surgery. Please keep her and Thom in your prayers. Casey also had surgery and could benefit from prayers.

Check the posted calendars and MeetUp for other coming attractions, classes, and events.

Club Contacts					
Officers			Directors		
<b>President</b>	Steve Cable	970-312-1005	<b>1 Year</b>	Sylvester Spaeth	970-846-2973
<b>Vice President</b>	Open Position		<b>2 Year</b>	Scott Warren	303-668-5743
<b>Secretary</b>	Kimber Johnson	970-589-4091	<b>3 Year</b>	Bruce Johnson	970-589-4091
<b>Treasurer</b>	June Steely	801-540-0488	<b>Finance</b>	Ken Kloska	303-915-9318
			<b>Past President</b>	Jeff Southern	243-0953
Committee Chairpersons					
<b>Audit</b>	Bev O'Neal	623-2522	<b>Leaverite Editor</b>	Susan McChesney	970-589-9358
<b>Building Maint</b>	Dave McCollough	549-7352	<b>Librarian</b>	Open Position	
<b>Compliance</b>	Bev O'Neal	261-5890	<b>Meet-Up</b>	Steve Cable	970-312-1005
<b>Correspondence</b>	Kathy Ericson	623-2522	<b>Membership/Badges</b>	Melissa Moroni	303-807-9864
<b>Decorating</b>	Linda Dunham	623-3610	<b>Nominating</b>	JoAnn Piburn	970-778-5333
<b>Display Cases</b>	Dave McCollough	549-7352	<b>Publicity</b>	Scott Warren	303-668-5743
<b>Education</b>	JoAnn Piburn	778-5333	<b>Scholarships</b>	Dave McCollough	549-7352
<b>Web Based Media</b>	Grete Raymond	970-433-0016	<b>Shop Foremen</b>	JoAnn & Ed	970-778-5333
<b>Field Trips</b>	Melissa Moroni	303-807-9864	<b>Show Co-Chair</b>	Deidre O'Callaghan	303-324-5559
<b>Hospitality</b>	Jan McCollum	245-9749	<b>Supplies</b>	Kathy Ericson	623-2522
<b>Inventory</b>	Pat Martinez	434-9270	<b>Grab Bags</b>	Open Position	
<b>Vests</b>	Linda Sims	314-2970	<b>GJ Facetors Club</b>	Casey Trump	970-250-9890

**Do you have items to buy, sell, or trade related to GJGMC?** You can post and read notices on the bulletin board to your left as you come in the main door of the clubhouse. Please make sure your notices contain your name and contact information as well as the date posted. And make sure to pull the notice once your item is bought, sold, or traded. Thanks!

MK Electric Wet / Dry Grinder Polishing Kit  
New in carrying case.  
Never used, Complete with grit wheels

Cost \$650 new, asking \$250

Contact Dave McCollough      970-549-7352



**If you would like to contribute a story of interest to the club via this newsletter, please have it to me via email: [smcchesney64@gmail.com](mailto:smcchesney64@gmail.com) no later than the 15<sup>th</sup> of the month, please.**

***BOARD MEETING – Second Wednesday of the month at 6:00 PM***

***COOKIE MEETING – Second Thursday of the month, cookies at 6:30, Meeting at 7:00 PM.***

***GENERAL MEETING – Fourth Thursday of the month at 7:00 PM  
B.Y.O.S. (bring your own snacks)***



## Junior Science Rock Club News 2024

**The March meeting will be held Tuesday, March 5th, 5:00 - 6:30 pm at the clubhouse. GJGMC member, Melissa Moroni, will be presenting "Fossils of Ohio". A tentative field trip is planned for Saturday, March 9th. (Details to come)**

16 members and their parents/guardians attended the February meeting held at CMU. Professor Fenton and the staff of CMU presented a unit on mapping. CMU geology students were there to help answer questions and find things on the maps provided. Professor Tellez demonstrated a digital topography application. Kids built their own landscapes in the sandbox which were displayed topographically on the big screen. Everyone was sent home with a geological map of the Colorado National Monument and Grand Junction area.

Saturday, a group of 22 joined Professor Fenton to explore the Devil's Kitchen area to compare the immediate landscape with the information contained on the geological maps. There was a short demonstration of a free app, Rockd, with multiple geological functions and information. Early in the day, there was a bonus when sharp eyes saw three Desert Bighorn Sheep scaling the side of the canyon.

### **How can GJGMC members support JSRC?**

There is great interest in day field trips and opportunities for rock collecting. Anyone interested in leading a trip specifically for JSRC please contact Melissa Moroni or Pam Bersch. Trips can feature geological land formations, collection of minerals/fossils, or viewing of rock art.

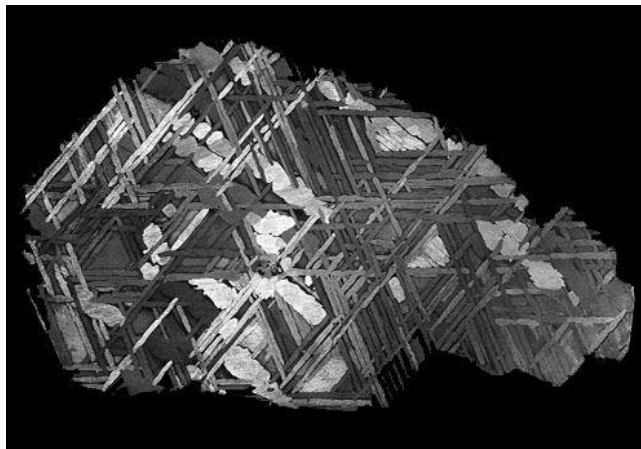


## Lee's Tidbits

How can you tell if you really have a meteorite?

It's not always easy and some of the suggested ways to tell are wrong. For example, a rock that has bubbles could just be basalt from Earth. And not all heavy rocks are meteorites. But the biggest challenge is telling meteorites from tektites.

Meteorites are rocks that fall from space, either rocky or metallic rocks. The heaviest are "Iron meteorites" made of mostly iron and nickel. The most beautiful have "Widmanstätten patterns" when sliced and dipped in acid.



(Pinterest.co.uk)

You'll see these in museums but if you consider buying one, be warned - they are REALLY expensive! The other main type of meteorite is "stony meteorites", which can have iron and nickel and/or quartz-like minerals and/or olivine (peridot) or basalt.

The other thing that is sometimes sold, mistakenly, as a meteorite, is a tektite. These are made of rock on the earth that was melted by the impact of a meteorite and kicked up into the air. They form black, glassy rocks. They may have a teardrop or dumbbell shape. They are not nearly as valuable as meteorites but are still collectors' items.

The US Geological Survey has a website that gives tips on how to tell Meteorites from Tektites:  
<https://www.usgs.gov/faqs/i-think-i-found-a-meteorite-how-can-i-tell-sure>

Unfortunately, from time to time, someone sells "meteorites" or "moon rocks" or other exotics, sometimes knowingly, and sometimes really thinking that's what they are. So it's always good to check the source if you are trying to buy one, and if you find one, to take it to a local geologist for identification.

There are a few meteor craters around, where you may or may not be able to collect, and most pieces have probably already been picked up. Close ones are the Arizona Meteor Crater and Odessa Meteor Crater in West Texas. The biggest one in the US is the Chesapeake Bay Crater, just recognized in 1990, obviously because it's underwater in Chesapeake Bay.

# March 2024



Sunday	Monday	Tuesday	Wednesday	Thursday	Friday	Saturday
25	26	27	28	29	1	2 Open Shop 9-12
3	4 Basic Silversmith 6-9 PM	5 Basic Silversmith 6-9 PM	6 Open Shop 12-3 Board Meeting 6pm	7	8 Fast Track Lap 9-5	9 Open Shop 9-12 Fast Track Lap 1-4
10 Faceted Stone Setting 10-4	11 Basic Silversmith 6-9 PM	12 Basic Silversmith 6-9 PM	13 Open Shop 12-3	14 Cookie Meeting 7pm	15	16 Open Shop 9-12
17 Faceted Stone Setting 10-4	18 Basic Silversmith 6-9 PM	19 Basic Silversmith 6-9 PM	20 Open Shop 12-3	21	22	23 Open Shop 9-12
24	25	26	27 Open Shop 12-3	28 General Meeting 7pm	29	30
31	1	Notes				

## GJGMC Spring Indoor and Outdoor Craft Show

April 13, 2024, from 9 AM to 3 PM

Admission is free and open to the public, a food truck will be available

Vendors wanted. Contact Kathy Erickson at 970-434-3033 for more details

Booth fees are due by March 31st

(leave a message with call-back information)

# April 2024



Sunday	Monday	Tuesday	Wednesday	Thursday	Friday	Saturday
31	1	2	3 Chain Making 6-9	4 Chain Making 6-9	5 Fast Lapidary 9-4	6 Open Shop 9-12 Fast Lapidary 1-4
7	8	9	10 Open Shop 12-3 Chain Making 6-9	11 Cookie Meeting 7pm Chain Making 6-9	12	13 Open Shop 9-12 Craft Show 9-3
14 Bracelet Making Class 10-4	15	16	17 Open Shop 12-3 Board Meeting 6pm Chain Making 6-9	18	19	20 Open Shop 9-12
21 Bracelet Making Class 10-4	22	23	24 Open Shop 12-3	25 General Meeting 7pm	26	27 Open Shop 9-12
28	29	30	1 Open Shop 12-3	2	3	4 Open Shop 9-12
5	6	Notes				

Classes	Instructors	Phone #	Open Shop
Adv. Lapidary	Thom Ericson	970-623-2522	Shop Chairmen: JoAnn Piburn & Greet Raymond  * Previous Instruction in use of equipment in is required before using any tools or machines in the shop. * Sign in each time you use the shop. * Help with the clean up before leaving. *Shop fee is \$5/session for EVERYONE. *Slab saw fee is \$.25 per square inch.
Beginning "Fast" Lapidary	Ed Raymond	250-2967	
	Grete Raymond	970-433-0016	
Bracelet Making	Theresa Pytell	303-229-9216	
Casting	Cindy Teare	970-462-6806	
Chain Making	JoAnn Piburn	970-778-5333	
Cuttlebone Cast	Judy Nason	250-9128	
Enameling	Karen Sayre	402-960-7370	
Faceting	Casey Trump	970-250-9890	
Faceted Stone Setting	Theresa Pytell	303-229-9216	
Filigree	Pam Bersch	970-242-3134	
Intarsia	Sue Smith & Val Medeiros	970-245-5602	
Opals and Turquoise	Thom Ericson	623-2522	
Wire Weaving	JoAnn Piburn	970-778-5333	
Wire Wrapping, basic & adv.	Joyce Trump	970-255-8045	
Silversmith, Basic & Adv.	JoAnn Piburn	970-778-5333	
	Theresa Pytell	303-229-9216	



## Club Information

The Grand Junction Gem & Mineral Club, Inc. is affiliated with the Rocky Mountain Federation of Mineralogical Societies. The clubhouse is at 2328 Monument Road, Grand Junction, CO. Our mailing address is P. O. Box 953, Grand Junction, CO 81502. We are a nonprofit, 501(c3) tax-exempt, educational organization. Our purpose is exclusively educational and social: To increase and disseminate knowledge of the earth sciences, specifically minerals, gems, rocks, artifacts, fossils, and similar subjects; To promote and perpetuate knowledge of the lapidary arts; To encourage field trips; To encourage greater public interest and education in gems, fossils, and minerals, cooperating with established institutions in such matters. The Grand Junction Gem and Mineral Club meets on the second and fourth Thursday of each month in our club building. November and December meetings will be on the second Thursday only. Our Annual Rock Show is held on at the Mesa County Fairgrounds in September. Classes and workshops are offered throughout the year. Upcoming events are listed on MeetUp and posted in the newsletter.

## The Facetors' Group

The Facetors' Group meets on the 3<sup>rd</sup> Saturday of each month at 9:30 am. They have a Project of the Month and a People's Choice. They also have teachers available for one-on-one classes. Contact Thom Ericson at 623-2522 for information about the group or classes.

## Dues

**Dues are paid by calendar year and are due by Jan 1<sup>st</sup>.** Please pay your dues at the meeting or send a check made out to Grand Junction Gem and Mineral Club, P. O. Box 953 Grand Junction, CO 81502. Prospective members should attend one general meeting to obtain a membership application. New members joining after July 1 will pay half for the remainder of the year.

Adult Member - \$40.00 (18+), 2nd Adult, same household - \$10.00 Children under 18 years, same household - No Cost

The Leaverite News is your newsletter. Articles, ideas, and news should come from club members. If you are an officer, teacher, director, or committee chairperson, plan to **submit monthly updates by the 15th of each month to [smcchesney64@gmail.com](mailto:smcchesney64@gmail.com)**. *Leaverite News is published by the Grand Junction Gem and Mineral Club, Inc. Articles printed in this newsletter are the experiences and/or opinions of the individuals submitting them. They do not necessarily reflect the views or opinions of the Grand Junction Gem and Mineral Club, or the editors. We are not responsible for the authenticity, safety, or reliability of publications. All articles/photos are included in accordance with fair use for research and education. Caution and safety should always be practiced when trying out any new idea, venture, or exploration in the field. We request corrections and/or additions to articles.*

## **Grand Junction Gem and Mineral Website and Meetup**

Our website, [www.grandjunctionrockclub.org](http://www.grandjunctionrockclub.org), contains our meeting information, the Leaverite Newsletter, Classes, Field Trips, and Photo Gallery. The Club is also registered as the Grand Junction Gem and Mineral Club on **Meetup**. Meetup is an online application that brings people of common interests together. Our meetings and field trips are posted on MeetUp at: <https://www.meetup.com/Grand-Junction-Gem-and-Mineral-Club-Members/> Paid Members should click "Join this group" in red and answer the questions that pop up. Once your status is confirmed as a paid member, you will be given access to our other private Meetup which includes specific field trip information, and other information needed by paid members. If you have any problems call Steve Cable at 970-312-1005.

