



Looking over Broken Arrow, Oklahoma, from the east. Photo by Liz Thomas. Used with permission.



# The Rocky Mountain Federation News

October 2024



The official publication of the Rocky Mountain Federation of Mineralogical Societies, Inc. The RMFMS is a regional member of the American Federation of Mineralogical Societies, Inc. Email receipt of the *RMF News* is a privilege of membership in the RMFMS, and it cannot be exchanged by the editor for individual club newsletters from other regional federations. Accessible to the public on [www.rmfmts.org](http://www.rmfmts.org).

What's Inside:

President's Message. . . . . 2-3

Convention Advisor Report. . . . . 3, 7, 8, 9

Safety Tips. . . . . 4

Where in RMFMS is Rocky?. . . 4,14 ,25, 26

Treasurer's Report, Kansas State Director Report. . . . . 5-6

Congrats to Steven Veatch!. . . . . 6

Wheels on Rails-Red Dirt Ramble, OKC. .6

Convention Proxies & Supplies . . . . . 7

Update-All American & Editor Contests. 8

Quick Tips for Editors-Good Articles. . . 10

Club Corner-Tulsa R&MS. . . . . 11

2024 RMFMS/OMGS Show. . . . . 12

Convention Field Trips-Updates. . . . 13-19

2024 Convention Schedule. . . . . 20

Moon Anchor Mine & Maricopaite. . 21-22

Favorite Fossil Made Famous. . . . . 23-25

Upcoming Shows & Events. . . . . 26-29

Hot Links-Editor's Picks. . . . . 28

2024 Officers, Cmte Chairs. . . . . 30-32

RMFMS Purpose & Policies. . . . . 33

AFMS Code of Ethics. . . . . 33

---

Information for the **November** issue is due to [LJGRALG@aol.com](mailto:LJGRALG@aol.com) by **October 15.**

**President's Message**

*Bob Regner, RMFMS President*



Well, this is it for me and my President Messages, at least for a while. Unless you live in a very deep hole you know that we are in the middle of election season. I personally have not had anyone ask for a pardon or to have a sentence commuted, so I guess we are good that way. I suppose the only thing I can do is throw out a bunch of big words and make an executive order. I would like to say that henceforth, hereto and furthermore, that this be known as ROCKTOBER! I suppose that is all I have to do on my way out of office. It is an Executive Order, so it stands until someone takes it down.

This year is a bit unusual, because our convention and elections are being held so late in the year. It is less than one week from elections until I hand off "The Hat" and the Presidency to our nominee, Jim Gray. Jim will be the President-Elect for just 5 or 6 days, depending on how you count, before he takes over and becomes President of this great organization.

I believe we did a really good job getting committee positions filled during this term in office, and we got some business taken care of. We really still and always have a whole lot more to do. I need to make sure that all of the Board positions are filled and that the people holding the positions want to be there and that they are active. Please contact me to let me know if you want to continue, or if you do not want to. I believe we need to start purging names of positions that are inactive and getting them filled with people who actually wish to do those jobs. If you know anyone at all who would like to get involved, please contact me or have them give me a call. Remember, you are never alone with your committee. If you need help, all you have to do is ask.

OK, now just a little bit about what is going on with me. This Saturday, October 5th, my very kind and lovely wife Donna is having a Soiree (party) for me. I am coming up on my sixty third birthday and the party is more of an anniversary. Forty years ago, on my twenty third birthday I was lying in a hospital bed at the Medical Center of North Hollywood receiving my last Chemotherapy treatment. I had spent most of my twenty second year of life being treated for cancer, stage 4. I had three separate surgeries, removing a total of eleven masses and then I received three pretty vicious cycles of chemotherapy. Back then they were still in the experimental stages of these types of treatments and believe me, the word vicious as I use it here is an understatement. It is almost comical these days when I go to the doctor and they learn of this history I feel that they are almost in disbelief that I am still here after this many years from this diagnosis.

*continued on page 3*

President's Message — *continued from page 2*

After all of these many years, there have been some side effects, as you may imagine. The doctors have discovered that as much as chemo does good, it also does a lot of long term damage. For me, that happens to be degenerative disk disease. Over the last five or so years, I have had three fairly serious spinal fusion surgeries. I am fused from my tailbone to just about where my shoulder blades start. I am a very fast healer, but I also have a bit of an issue that causes severe side effects. This last surgery went really great for about three and a half weeks until I started having severe nerve pain. The bad part this time is that the pain meds that they try to use do not work on this type of pain.

OK, now the reason for this problem goes back to just over three years ago. You all remember a few years back to that thing they called Covid? Well, my work was one of the businesses that said we were work critical, so I got to carry around one of those pieces of paper giving me permission to be out and about working. It also gave me a notification stating that I had to spin the lottery wheel to get one of the shots dictated by luck. I ended up with the J&J shot and soon after that, I started having some severe medical issues such as hives, welts, swelling, rashes, and a whole slew of other issues tied to my shot. It took the medical community two and a half years with CAT scans, x-rays, MRI's, many - many ER visits, Echo Stress tests, kidney doctors, literally hundreds

of blood tests, and even multiple visits to the Mayo Clinic, etc., etc., etc.. After two and a half years, I mentioned something that had been abnormal on a blood test, and it was like a light went off in my doctor and boom, I had a diagnosis. I am told I now have a very rare disease known as Hereditary Angio Edema. The trigger is unknown, there is no known cure, it is not terminal but I get to take about \$70,000 in medication every month to try to keep the symptoms away, which is pretty much hit or miss.

All of this put a hurt on me for awhile, but it is not keeping me down. I have gotten back to almost fully active. I even had the doctor release me to go back to work with no restrictions and have been back for a couple of months now. I even stopped taking almost all of the pain meds they want me to take. They don't really work so why bother.

This has mostly been for those of you who know me and were aware of the fact that I have been going through some real crap over the last few years. I suppose this has been way longer than normal and probably longer than you wanted to read, but it should explain a few things to those of you that have been paying attention. I can't wait to see all of you in OKC and I hope to have time to sit with you all to visit. Until then.....

---

## RMFMS Convention Advisor's Report

*Liz Thomas, Wearer of Many Hats*

I have always worn many hats within my local club and RMFMS. But the one I love the most is RMFMS Convention Advisor. The description of my job is "the liaison between the Federation as a whole and the Host club in Convention matters of mutual concern in accordance with the RMFMS Convention Code." In the RMFMS Operating Procedures there is a whole section over the Convention Advisor's duties. *The President shall appoint a Convention Advisor whose job it shall be to:*

1. Contact the club that has been selected to host an RMFMS Convention as soon as possible after approval in order to help get the Club started with organization.
2. Refer the Host Club and Show Chair to the part of the Operating Procedures containing information regarding the Show and Convention.

*continued on page 7*

## Safety Tips

Jodi Brewster, RMFMS Safety Chair



This Safety article was shared by Cinda Kunkler with the Topeka Gem & Mineral Society, and also the RMFMS Historian. Thank You Cinda for passing on this on. I

really think people should know about the "What 3 Words" app that is available for cell phones. From your phone go to Google Play to download. Here is a link that will explain how it is used . [https://youtu.be/nOgcUHPwWis?si=kPY3rl\\_p0ZRRBJSI](https://youtu.be/nOgcUHPwWis?si=kPY3rl_p0ZRRBJSI)

Does your club have Safety ideas they would like to share? You can email me at [rmfmssafety2024@gmail.com](mailto:rmfmssafety2024@gmail.com). Looking forward to hearing from you.

### From: Cinda Kunkler

Our club recently made a list of items to include for First aid for field trips. This is what we have done.

1) Several of us attended a **"Stop the Bleed"** course offered by a local hospital. It was very informative and I would recommend others to attend a similar course if they can find one. They suggested for field trips, having a first aid kit and, trauma supplies with us when out and about. (See list of suggested trauma supplies below.)

2) **"What 3 Words"** is an app that can be added to your cell phone. It will be able to help especially when on a field trip in a remote location. <https://what3words.com>. When you need to call for first

responders, ambulance or other emergency services, it will search your location on the phone which when given to them can pinpoint where you are by giving them the words it displays.

3) **Standard first aid kits** should be carried in the lead vehicle on a field trip and preferably on at least one other following in case of emergency. Many kits are available on-line listing what they may include, or you can make up one on your own. I will attach a list of supplies that we would use in our clubs kits.

4) When in your 'shop' working on rocks you may want to have **ear protection** (machines are loud) and be sure to wear **safety glasses** to protect your eyes from flying chips.

5) On a field trip you should **wear sturdy shoes, hat** to keep the sun off, if near a road – **safety vest**, of course **sun screen, water and insect repellent**. If you want to move a large rock – always lift away from you in case a snake or other creature is hiding under it.

### Trauma supplies:

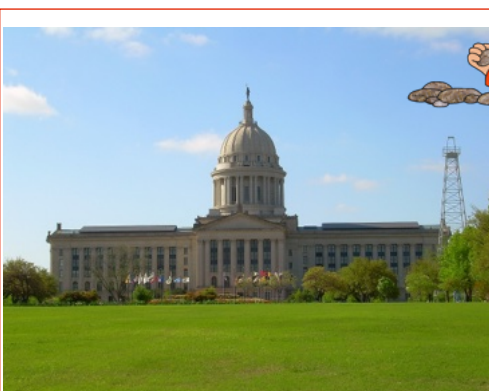
Madison Supply Medical Scissors, EMT & Trauma Shears

Rhino Rescue Medical Tourniquets

North American Rescue Compressed Gauze, pk of 2

North American Rescue Hyfin Vent, pk of 2

Olaes TAC\_OALFP Bandage



### Where in the RMFMS is Rocky?

- State Capitol, OK?
- State Capitol, CO?
- State Capitol, AZ?

Photo at left by Caleb Long, CC BY-SA 2.5

Clipart at top by Phillip Martin.

CC BY NC ND 3.0. Answers on page 26.



## Treasurer's Report

Gene Maggard, RMFMS Treasurer

**CLUB TREASURER UPDATES** – *If you were the treasurer for your organization but are no longer, could you please forward this newsletter to the new treasurer and ask them to contact me with updated treasurer contact information?*

### Dues Dues Dues

Yes, it is that time, again. Dues from each club/society are due by December 15. December 15 is the magic date because we need to get your club report that accompanies the dues payment by that date in order to include your club information in the RMFMS 20/24-25 Directory. *If you are having officer elections in January, as some clubs do, please call or email me and we will see what we can do to get your new officer information into the directory.*



Dues notices and forms will be sent to each club by email in mid-October where there is an email address available. Notices to other clubs will be by US mail. If you receive the dues notice but are no longer the treasurer or other officer, please forward it to your treasurer as requested in the notice. As explained on the form, we are requesting that you send in the annual reports using email and Word if possible. Otherwise, use USPS. Just follow the directions on the form.

If your club does not receive the dues notice either by email or USPS, please contact me ASAP at [316-742-3746](tel:316-742-3746) or [gandpmaggard@gmail.com](mailto:gandpmaggard@gmail.com) so that we can arrange to get your club information to me by the December 15 deadline. You can also access the dues form on the RMF website. (<https://www.rmfmts.org/official-documents>)

Dues from each club are determined by multiplying \$1.50 times each dues paying member age 12 or older in your club as of October 31, 2024. Clubs having family memberships should count each family member age 12 or older.

Clubs wishing to be covered by the RMFMS arranged liability insurance should include payment as directed on the report form. This insurance is for club general liability coverage. Show, meeting place and field trip activities are covered. If you have a landlord that is wanting an "Additional Insured certificate," one can be provided at no additional charge. Email me to get a copy of the Additional Insured certificate request form.

Please feel free to contact me at the above addresses if you have any questions.

## Kansas State Director Report

Brad Davenport, Kansas State Director

Howdy from NE Kansas!

Things have changed very little here in Kansas. Membership in the state's clubs has remained very stable. Just about enough new members to replace those leaving for a number of reasons. Of course aging is the number one cause of losses.

Since last year I have attended 5 shows. One in Wichita, two in Kansas city, one in McPherson and my own in Topeka. The Wichita show seemed a little quieter than the ones I have attended in the past. The shows in KC are large and busy. The McPherson show is always my favorite. While not real big it is always active and well attended. I am impressed with their number of young people in attendance.

*continued on page 6*

Kansas State Report — *continued from page 5*

Our show in Topeka had a much better door count than we had had in several years.

I did not attend any General meeting of the other clubs outside of my own. Times and locations of their meetings make it difficult for me to do the traveling required.

I keep all of the clubs informed as to shows and special events around the area. I forward all communications from the AFMS and the RMFMS. I rarely ever get any kind of response back from any of them.

This brings me to the state's fifth club. The North Central Kansas Rock & Mineral Club. In the four years I have been this state's director, I have never gotten any responses from them. I know that they are a small club that do meet monthly at a pizza place, but I know of no other activities they have.

This will be my last report to you as I am giving up the state directorship as of this convention. It has been an honor serving. — Brad Davenport

**Congratulations are in Order!**

*From John Emery, CSMS Editor*

Steven Veatch, CSMS member, will be honored with the Breit Award for Historic Preservation in October during his trip to Colorado. The Teller Historic and Environmental Coalition will present the Breit Award to him at a banquet on October 20, 2024 in Woodland Park, Colorado. This Colorado award honors individuals

and organizations for their efforts in preserving the history, environment, and culture of Teller County, Colorado. The award is named in memory of Doris "Dee" Breitenfeld, a key figure in local conservation and preservation efforts.



Steven Wade Veatch

The coalition has acknowledged that his publications, articles, and research have played a crucial role in safeguarding the historical integrity of this specific part of the Pikes Peak region. Although he moved away from this county 3 years ago, he continues to conduct research there and publishes articles on the gold rush history of Cripple Creek and the ancient environments of the Florissant Fossil Beds.



John Emery

*[RMFMS Editor's Note: For "oh, so many years," Steven Veatch has generously shared his award-winning (RMFMS & AFMS) articles and poetry with us. In addition, he has done a stellar job working with our younger rockhounds, teaching them how to research and write about all things Earth Science. He continues to work with juniors in the Grand Traverse Area Rock & Mineral Club (Traverse City, Michigan). Congratulations!]*

**Wheels on Rails — Red Dirt Ramble**

*From Liz Thomas, Convention Advisor*

I have something that might interest you while you are in Oklahoma City for the convention. Check out <https://www.wheelsonrailsmi.com/>. Oklahoma City offers: Red Dirt Ramble (6 miles). Ride through the outskirts of Oklahoma City. Start at the Oklahoma Railway Museum and head north towards Adventure Park, passing through Lincoln Park Golf Course. Stop for a quick history talk while we turn the bikes around for you. Head back south, passing the museum and all the cool railroad equipment. Get to our second turn table, allowing you to turn your own bike and resting while we venture back to our starting point. Fun for all ages and abilities!



## Convention Reminders – Proxies & Supplies

Roberta Wagle, RMFMS Credentials & Supplies



Designed by Wannapik Studio, <https://www.wannapik.com/vectors/8247>, CC BY 3.0

### Delegate & Proxy Forms

The RMFMS Convention is coming up quickly. Please mail your forms to the Credentialing Chair to make that process easier for everyone. Also, please have a copy with you just in case USPS runs slow.

These forms allow the credentialing chair to confirm that each RMFMS club is represented, or at least the minimum number for a quorum are present in order to conduct business at the delegates meeting.

Liz Thomas has mailed the convention packet including these forms several times, and they will go out one more time before the convention. At this time only five of our 84 clubs have responded. If you choose to bring your forms in personally, check in will be Friday and Saturday morning from 9:00 am to 12:45 at the hotel.

See you in Oklahoma City!  
Roberta Wagle  
RMFMS Credentialing Chair  
21402 E Pecan Dr.  
Catoosa, OK 74015

### Supplies

I will have RMFMS:

- patches - \$4
- pins - \$2
- directories - \$5
- and AFMS pins - \$4

available this year; however, due to the layout of the convention, I will not be selling during the happy hour prior to the banquet. I will try to have them available at the credentialing table on Friday and Saturday morning. — Roberta Wagle



RMFMS Patch - \$4



AFMS Pin - \$4



RMFMS Pin - \$2

Convention Advisor — continued from page 3

3. Inform the Host Club of the financial responsibilities of the RMFMS and the Host Club.
4. Provide information to the club on the needs of the RMFMS (and AFMS, when appropriate) regarding meeting space, scheduling times of meetings, display cases, and any equipment necessary to carry out the meetings, etc.
5. Provide information and samples, if possible, of what publications are needed to publicize the event, and help put together a schedule of when publicity needs to be sent.
6. Serve as a resource person when the Show Chair or Club has questions.
7. Remind the Host Club to secure local hotel and tourist information, if possible, to be send in Publicity Packet.

continued on page 8

## Update on All American Club and Editor Contests

Linda Jaeger, RMFMS BEAC Chair

### All American Club Award

I would like to congratulate The Tulsa Rock and Mineral Society for winning GOLD in both RMFMS and AFMS for 2023.

It's that time of year to be working on a yearbook for 2024. Again this year the due date will be early due to early conventions. [The 2024 yearbook will be due to me \(RMFMS\) by January 15, 2025](#) in order to meet the January 31st deadline to the AFMS.

If you have not started, there is no time like the present...The 2024 guide has not been posted to the [www.amfed.org](http://www.amfed.org) website yet, but it should be available soon. If your club plans to enter please start the process with the 2023 guidelines.

If you have any questions, please do not hesitate to contact me.

—Roberta Wagle, All American Club Chair  
[waglemom@gmail.com](mailto:waglemom@gmail.com)

### RMFMS Bulletin Editors Contest Update

This year our RMFMS show/convention is after the AFMS show/convention. That means the **AFMS results** were made public (last month) before the RMFMS awards will be given at the breakfast in OKC during the RMFMS Convention. *Please see pages 6-7 of the **June RMF News** for the AFMS placements for our RMFMS winners. I will present both the RMFMS and the AFMS awards at the Editor's Breakfast in Oklahoma City, October 27, 2024.*

We are in a similar situation for the 2025 Bulletin Editors' contests. Here are the **important deadlines for the 2025 RMFMS Bulletin Editors Contest:**

- ♦ **Jan. 3, 2025-entries due to Linda Jaeger**
- ♦ **Jan. 31, 2025-judged RMFMS entries due to AFMS judges!**
- ♦ Because AFMS/EFMLS show is March 2025 **NOW is a good time to start looking over your bulletins for entries in the 2025 contest! I will email contest materials in early November 2024.**

Convention Advisor — *continued from page 7*

8. Provide ideas and suggestions for themes, decorations and table gifts for the event, if asked.
9. Stay in contact with the Show Chair and Host Club until the Convention is over and all accounting is finalized.
10. Serve primarily as "advisor" and "resource person" since this event is the Host Club's responsibility.

The next section is Management over the RMFMS Convention and Shows. There are 5 whole pages that can be quite daunting and seems hard to put on a show to those who have not been to or held a convention. But it is not.

I was asked by the Grand Junction to come speak to their club to go over the process and answer any questions they may have due to the fact they will be hosting the Convention in 2025. This is an amazing club with a great turnout for the meeting I attended. They first wanted me to go over why any club would want to be a member of RMFMS, and I think with all the things I spoke about I had them understanding much better about the succession of the organization from the American to Rocky Mountain to their local club. I covered insurance, library, Tech support, All American and the yearbook, Convention and much more.

*continued on page 9*



Convention Advisor — continued from page 8



When I talked about preparing for the Convention, they were astonished at how much help RMFMS will be and that hosting a Convention will be no cost to the club. They especially liked the idea that we will not take any money from their show. This was an old practice that is long gone. I went over the hotel, meetings, work sheet on the grant we give the club, field trips, banquet and breakfast. We talked about competitive cases, which they do not do in their show, but come to find out they have a member whose husband used to enter and did very well. She is more than willing to step up and help her own club members put competitive cases together for this show. That was a very pleasant surprise for us to hear. When I was done talking, and after their business meeting, there were many who came to speak directly with me about the convention, with Bennie (my husband) about competition cases, with Robert Wagle (TRMS member) about the All American year book and with Larry Wagle (TRMS member) about the silent auction we have at our show. It was awesome for all of us to go over all the different areas they wanted to know about.

It was a fantastic meeting and talk, and I can not wait till 2025 for the convention at Grand Junction. I have some pictures of my speaking, their speaker, and their absolutely marvelous club house and work shop. Thank you to the Grand Junction club for having me to speak to you and a special thank you to Pat Martinez and Steve Cable for inviting us.



Photos contributed by Liz Thomas





## Quick Tips for Editors – Good Articles

Linda Jaeger, RMFMS BEAC

### **Contest Time is Coming – What Are Judges Looking for in Articles?**

Judging for articles published in club bulletins is based on four areas: style and language, article quality, author's effort, and educational/entertainment value.

**Style and language.** Articles need a catchy and/or appropriate title and should give the author's name. Judges look for writing that is interesting to read, easy to understand, and grammatically correct. (Using spell check, grammar check, and a live proofreader can help!) Accuracy is also important. Editors should cut any irrelevancies before they publish an article. These items account for 25 points of the scores awarded.

**Quality** is judged according to what type of article was written. **Informational** articles include how-to, hints, lapidary, historical, etc. **Science** articles include mineralogy, geology, paleontology, etc. Articles about **collecting areas** should be about the collecting sites, what specimens are found there, why an area is being closed, etc., and should not be a travelogue. *[Travelogues belong in the Written Features category!]* **Club activities/members interest** articles can include editorials, shows, civic-community-school activities, etc. **Humorous** articles must relate to the rockhounding hobby, but can be "fun." Judges decide into which of these categories an article fits and award a maximum of 20 points for what they consider "quality."

**Author's effort** means the author must demonstrate correct facts, adequately cover the subject, credit quotes and illustrations, give references for technical matters, and have no copyright violations. Before a judge rates these items he decides whether the author had to do research to write the article or based the article on personal experience or supplemented his personal experience with

research. This portion of the judging is worth 35 points.

The **educational and/or entertainment value** of the article can earn up to 20 points. Judges will ask themselves if reading the article teaches something about the hobby or if the article makes the reader laugh.

Obviously, some of the judging has to be subjective. However, most judges are folks who have been authors and/or editors themselves, and they all use the same framework (judging sheets) when they judge. These judges are very qualified to do the job.

Editors can "practice" being a judge themselves by choosing their favorite articles from what they've published, then using the "sample judging sheets" that were included with the contest materials. They can also download these sheets from the RMFMS website at <https://www.rmfmts.org/bulletin-editors-contest>.

This article was written by using the AFMS judging sheets (same as RMFMS judging sheets) and was also based on the personal experience of the author.

*[The above article is from the RMF News, 9/2006. It has been edited slightly by me (original author) to be current.]*

(Clip art above from Discovery Channel School Image Gallery, 2003. Permission to use for educational, not for sale publications granted.)



Clipart above from dreamstime\_s\_19076569.jpg

## Club Corner – Tulsa Rock & Mineral Society

Martha Rongey, TRMS Web/Library/Publicity



Rocky ready to greet attendees at the opening.

Rocky the Rockhound, the new Tulsa Rock and Mineral Society mascot, welcomed visitors to their annual show in July.

Waving, posing for photos and sniffing out his favorite show items to attendees kept Rocky busy over the weekend. Rocky brought out the kid in everyone by giving high fives (hounds only have four front toes), and of course paw bumps.

During the two-day show Rocky stopped by the kid zone, tried to learn flint knapping, and even watched geodes being cracked open.



Rocky high-fives a young rockhound.

Show visitors, young and old, enjoyed Rocky's debut, and the club reported that the new mascot will make appearances at other club activities throughout the year.



Rocky during the TV interview with TRMS Past President, Peter Grice.



Rocky trying to learn flint knapping from Leon Reeder.



Rocky with Roberta Wagle & Liz Thomas.

**All photos by Martha Rongey.**

## 2024 RMFMS/OMGS Show – Don't Miss This!

Jamilee Poor, OMGS

**Oklahoma Mineral and Gem Society (OMGS) and Oklahoma City** extend a warm welcome to the members of the Rocky Mountain Federation of Mineralogical Societies. Oklahoma City is named one of the best places to visit by Fommer's Travel as it offers culture, cuisine, attractions, and amenities you expect in a modern metropolis. Known as the Horse Show Capital of the World, we are rich in cowboy culture and outdoor adventures. We have plenty of hustle without the hassle of Big Cities, and the airport is very easy to fly in and out of. We invite our guests to not only attend the Conference and our annual Mineral and Gem Show, but also to extend your time here. [Oklahoma City Travel](#) provides maps and entertainment ideas such as the Oklahoma City Zoo, Botanical Gardens, the Oklahoma City National Memorial Museum, the Cowboy & the Western Heritage Museum, and the First Americans Museum to name a few. Our host hotel, the [Wyndham Grand](#), is located downtown and is within walking distance or you can take the trolley to Bricktown, Scissortail Park, the Art District and Automobile Alley. Enjoy the local foods, craft beers and wines and distilled bourbons. Attend an Oklahoma City Thunder basketball game which starts in October. There is lots to offer!



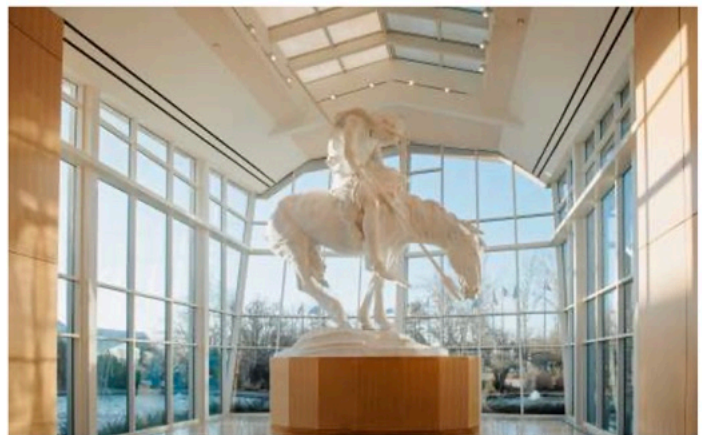
Bricktown Canal Rides



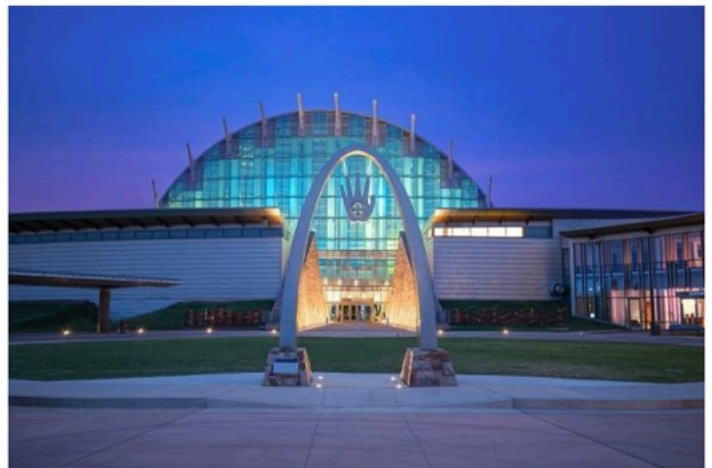
Oklahoma City National Memorial and Museum



Myriad Botanical Gardens



Cowboy Hall of Fame



First American Museum

## Updates – Convention Field Trips

From Liz Thomas, RMFMS Convention Advisor

### Private Behind-the-Scenes-Tour of the Vertebrate Paleontology Museum

Sam Noble Museum in Norman, OK

2401 Chautauqua Ave., Norman, OK

October 26, 2024 (Saturday) — 9am to 12:00 pm

**Limited to 20, so please register in advance**

Curator Dr. Jacqueline Lungmus will lead us through the research and storage rooms above the museum.



← from 10 N Broadway Ave, Oklahoma City, OK 73102 to 2401 Chautauqua Ave, Norman, OK 73072

**29 min** (23.5 miles)

via I-35 S

Fastest route, the usual traffic

**10 N Broadway Ave**  
Oklahoma City, OK 73102

> Get on I-235 S from N E K Gaylord Blvd, NE 2nd St and N Walnut Ave

5 min (0.9 mi)

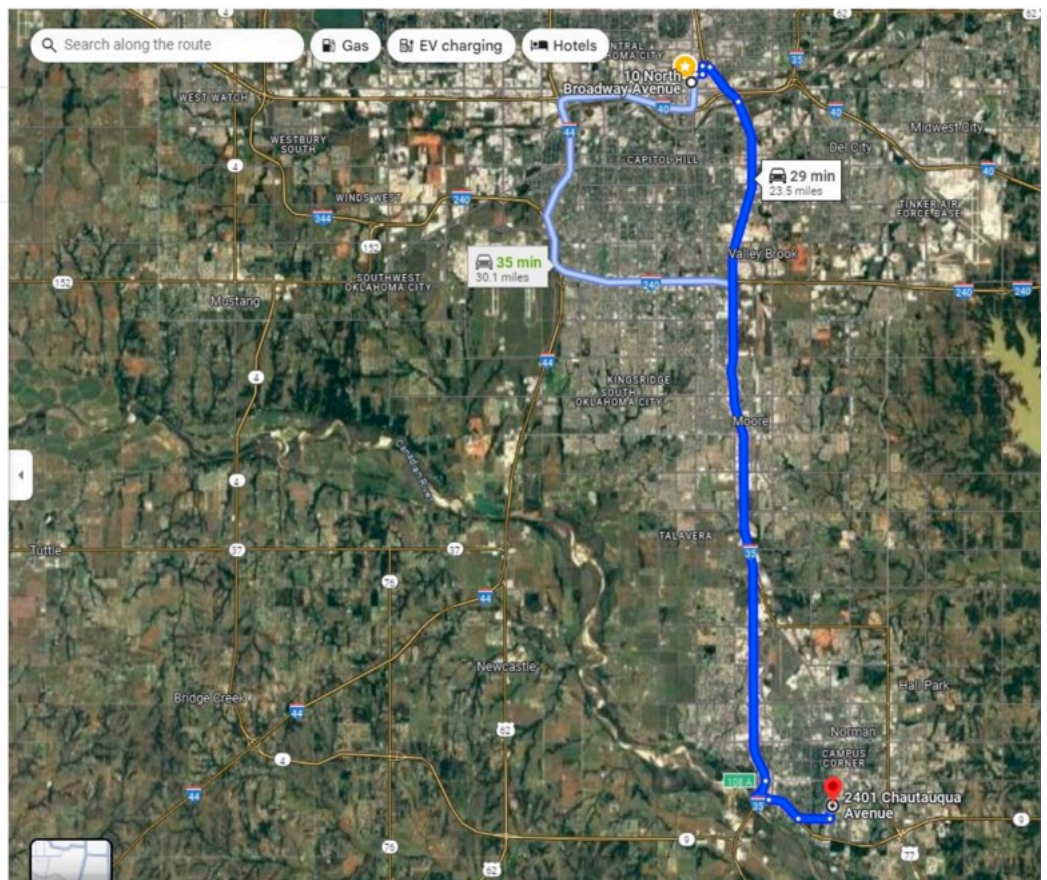
> Take I-35 S to OK-9 E in Norman. Take exit 108 A from I-35 S

19 min (20.2 mi)

> Follow OK-9 E, W Imhoff Rd and Chautauqua Ave to your destination

7 min (2.4 mi)

**2401 Chautauqua Ave**  
Norman, OK 73072



#### To sign up for this behind-the-scenes tour:

- email Jami Poor at [ok.mineral.gem.society@outlook.com](mailto:ok.mineral.gem.society@outlook.com)
- Tell her you want to sign up for this trip
- Give your name
- give the number of people in your party

continued on page 14

Convention Field Trips — *continued from page 13*



**Lake Stanley Draper Rose Rock Hunt**

October 25, 2024 (Friday) 1:00 to 5:00 pm

Lake Stanley Draper, 83 01 S.E. 104th St., Oklahoma City, OK 73165

*Meet at the Marina Building for inside toilets, to purchase snacks and to decide which of the hunting sites best suits your abilities*

- We have a permit to collect more than the 7 allowable rocks but remember that Barite Rose Rocks get heavy the more you collect. Bring a sturdy bag or buckets. You will be walking on sand paths with vegetation. We will have leaders for each site.
- Bike paths are around the entire lake so drive cautiously and stop and look before crossing.
- Most rocks are accessible on the surface with little digging required. If you do dig a hole, please fill it back in.
- Depending on the water elevation, some rocks may be in the water. You might wear shorts or pants with zip off legs and bring extra shoes to change back into.
- When you get home, use a water-pic and tooth-picks, or a pressure washer to remove the sand between the rose "petals".

[See the location descriptions and maps on the following pages.](#)

**Where in the RMFMS is Rocky?**



- State Capitol, OK?
- State Capitol, CO?
- State Capitol, AZ?

Photo at left by Gage Skidmore, CC BY-SA 2.0

Clipart at top by Phillip Martin. CC BY NC ND 3.0.

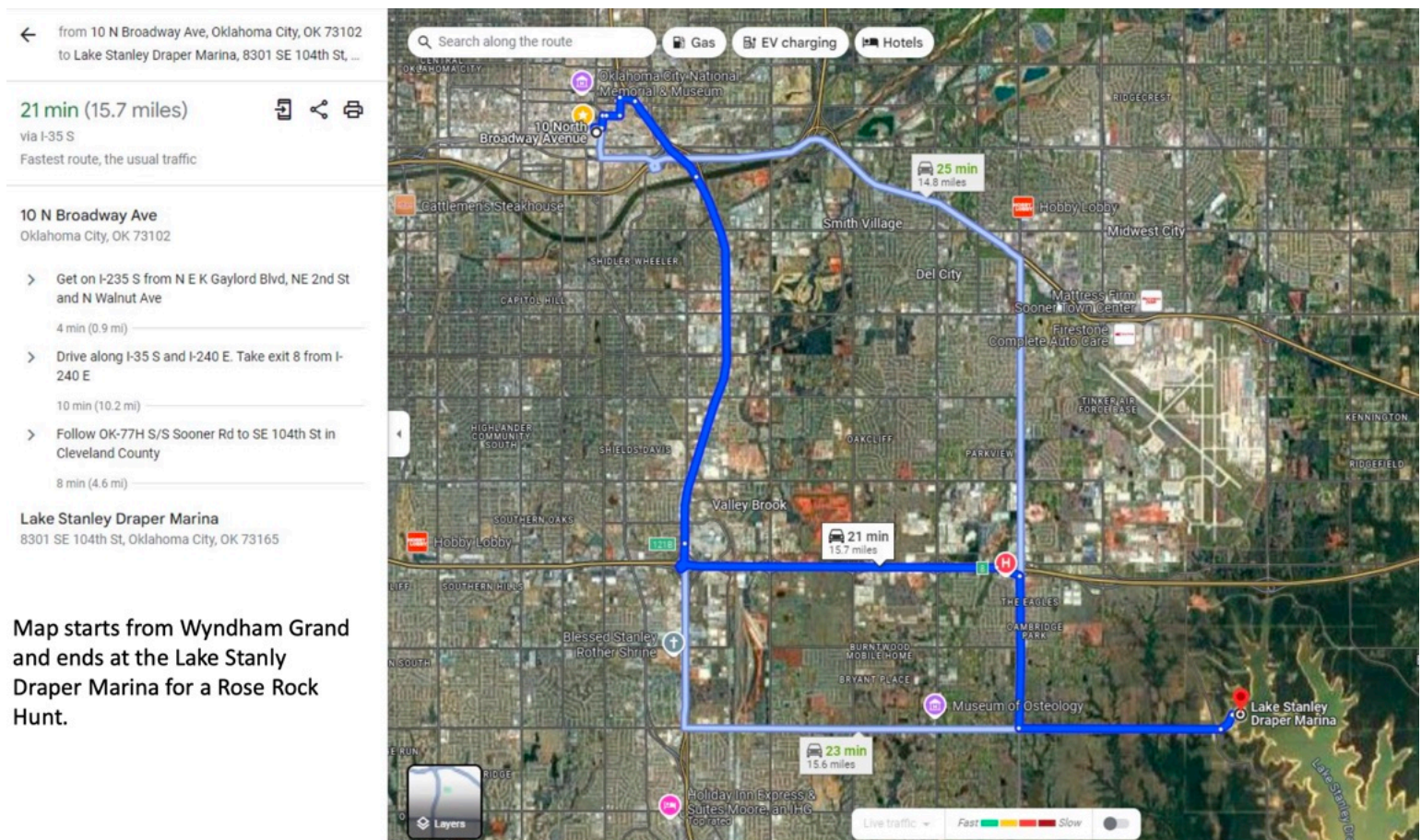
Answers on page 26.



Convention Field Trips — continued from page 14

[[Lake Stanley Draper — Rose Rocks](#)] We will look in 3 Locations, so look for the identifying flags to mark the exits. Depending on your time, you can find them in most areas:

1. **Point 11** — Small rose rocks at water edge. Easy walk to your car.
2. **Sunset Park** is located at the east side of the dam and has a small narrow peninsula to collect rocks on. Park on the circle parking area and walk to the collection site.
3. **Point2** — We will need to park on the west side (gravel road) of SE119 and W. Draper Drive and walk into the collection sites. It is 10 minutes from the gate to the split-off to the peninsula, and then 20 minutes to the tip. We suggest that you don't collect too many until your return trip to the car as barite gets heavy fast. You may be able to walk to Rose Rock Island as the water level is usually less than knee-high. Large wheel wagons may be useful if they roll well on sand. Mark your buckets in case you leave them on the path to be picked up when you return to your car.



Specific location info on following pages. . .

continued on page 16

Convention Field Trips — continued from page 15

from Lake Stanley Draper Marina, 8301 SE 104th ...  
to Point 11, Oklahoma City, OK 73150

8 min (3.9 miles)  
via W Stanley Draper Dr and N Stanley Draper Dr  
Fastest route, the usual traffic

Lake Stanley Draper Marina  
8301 SE 104th St, OKC, OK 73165

- Head northwest on SE 104th St  
0.1 mi
- Turn left to stay on SE 104th St  
0.3 mi
- Turn right onto W Stanley Draper Dr  
1.0 mi
- Continue onto S Midwest Blvd  
0.6 mi
- Turn right onto N Stanley Draper Dr  
1.7 mi
- Turn right onto Point 11  
0.2 mi

Point 11  
Oklahoma City, OK 73150

Location 1  
Starts at the Marina  
and goes to Point 11

from Lake Stanley Draper Marina, 8301 SE 104th ...  
to Lake Draper Sunset Park, 8MG4+P8, Oklahoma ...

9 min (4.5 miles)  
via W Stanley Draper Dr  
Fastest route, the usual traffic

Lake Stanley Draper Marina  
8301 SE 104th St, OKC, OK 73165

- Head northwest on SE 104th St  
0.1 mi
- Turn left to stay on SE 104th St  
0.3 mi
- Turn left onto W Stanley Draper Dr  
4.1 mi
- Turn left  
Destination will be on the left  
95 ft

Lake Draper Sunset Park  
8MG4+P8, Oklahoma City, OK 73165

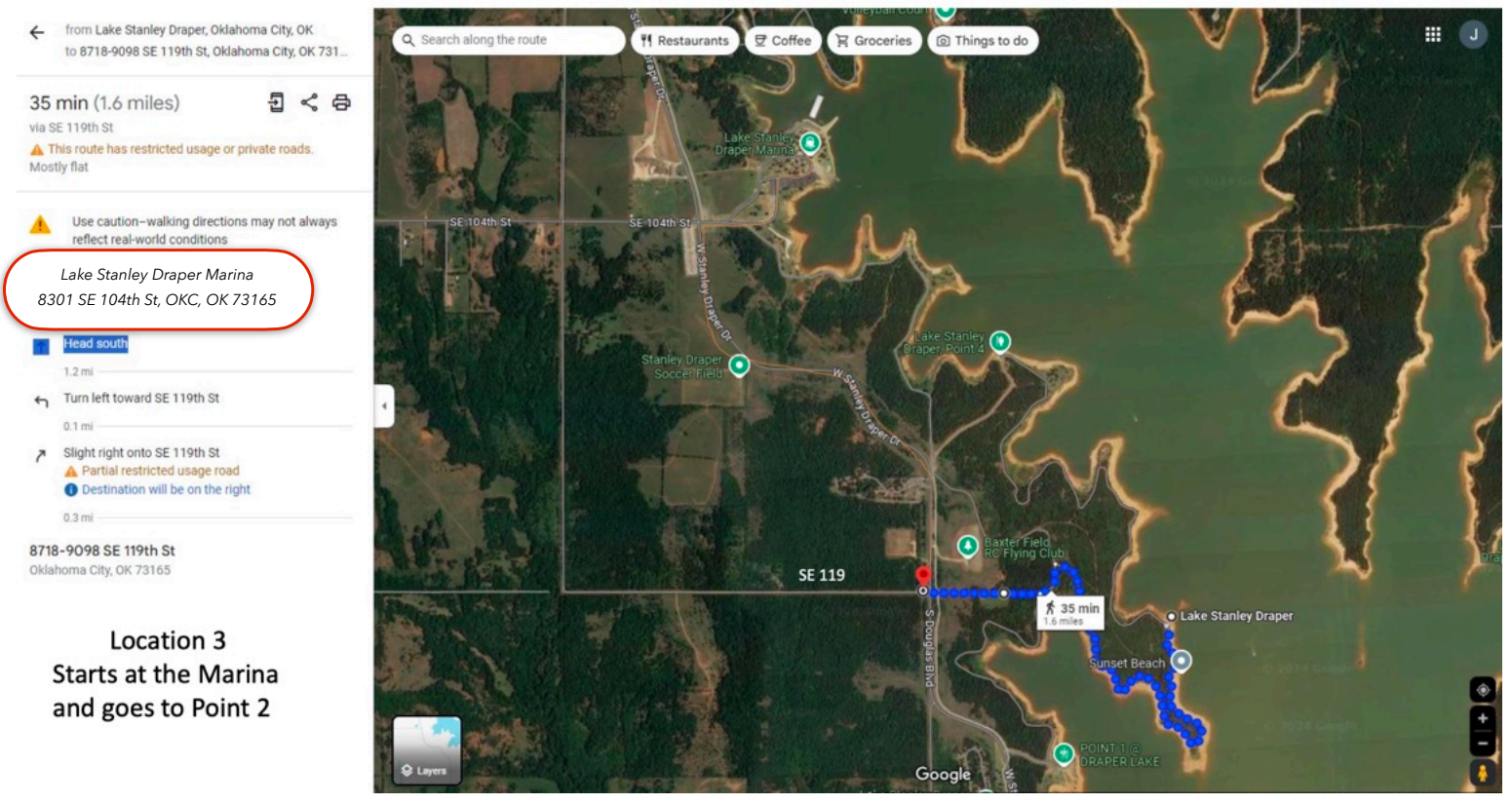
Location 2  
Starts at the Marina  
and goes to Sunset  
Park on the Dam

Last location on following page

continued on page 17



Convention Field Trips — continued from page 16



**Location 3**  
Starts at the Marina  
and goes to Point 2

**General Material Rock Hunt**

October 26, 2024 (Saturday), 8:00am-12:00pm

Among the many things typically found are agates, jaspers, petrified wood, Alibates flint, and aragonite; if you are really lucky, mastodon teeth and bones.

**Items you may need to bring:**

- Rock hammer or small hand tool to turn over the rocks in the pile. Little or no digging is required
- One or two buckets or sturdy bags for your finds
- A spray bottle with water
- Drinking water
- Snacks
- Closed shoes, tennis shoes, boots... Please no flip flops or open toe shoes.



General Material Rock Hunt  
October 26, 2024 8:00 am  
to 12:00 pm  
Meet at 15800 S.  
MacArthur Blvd.,  
Oklahoma City, OK 73173

**PLEASE BE THERE ON TIME.**

Each person will be required to sign a certificate releasing General Materials from any liability of accidents or injuries occurring during this event. We will have a short meeting with the plant foreman to go over the rules before going to the rock piles. Please listen and abide by these regulations.

Restrooms are available at the headquarters building. Parking is close to the quarry.

See map & directions on next page

continued on page 18

Convention Field Trips — *continued from page 17*

← from 10 N Broadway Ave, Oklahoma City, OK 73102 to General Materials Inc, 15700 S MacArthur Blvd,...

22 min (16.5 miles)  
via I-44  
Fastest route, the usual traffic

10 N Broadway Ave  
Oklahoma City, OK 73102

- > Get on I-40 W from N E K Gaylord Blvd and S Shields Blvd  
5 min (1.2 mi)
- > Follow I-40 W and I-44 to SW 134th St in Cleveland County. Take exit 110 from I-44  
12 min (12.3 mi)
- > Drive to S MacArthur Blvd  
6 min (3.0 mi)

General Materials Inc  
15700 S MacArthur Blvd, Oklahoma City, OK 73173

**Wyndham Grand to General Material**  
15700 S. MacArthur Blvd,  
Oklahoma City OK 73172

**Boley Agate Field Trip**

October 27, ( Sunday), 10:00 am to 2:00 pm

At a private Seminole County quarry located east of Konawa, OK and north of Ada OK.

**Meet at 9:45 am at the Seminole National Rivermist Casino at 14313 Old HWY 99 (US377 S.) Konawa, OK 74849.** This is a 1.5 hour drive from the hotel to to the Casino.

We will caravan to the Quarry at 10:00 am so please do not be late. This will be the last opportunity to use restrooms. The hunt officially ends at 2:00 pm.

Bring your buckets or sturdy bags, digging hammer, water and a snack. You will find a variety of choice agates and petrified wood in a short amount of time. We will be able to park close to the collection area.

Find out more about Boley Agates at: <http://www.ogs.ou.edu/geology/pdf/BOLEYAGATEhns.pdf>

Map and directions on following page.

*continued on page 19*

Convention Field Trips — continued from page 18

**Boley Agate Field Trip**

Wyndham Grand Oklahoma City Do...

76 miles

Light traffic · Leave at 8:15 AM

Via I-40 E, US-177 S

1:16

hr min

Hide details

Print

**A** Wyndham Grand Oklahoma City Downtown  
Leave at 8:15 AM  
10 N Broadway Ave, Oklahoma City, OK 73102

↑ Head north on N Broadway Ave toward W Main St

0.2 mi

→ Turn right onto Robert S Kerr Ave

0.1 mi

↑ Road name changes to NE 2nd St

0.2 mi

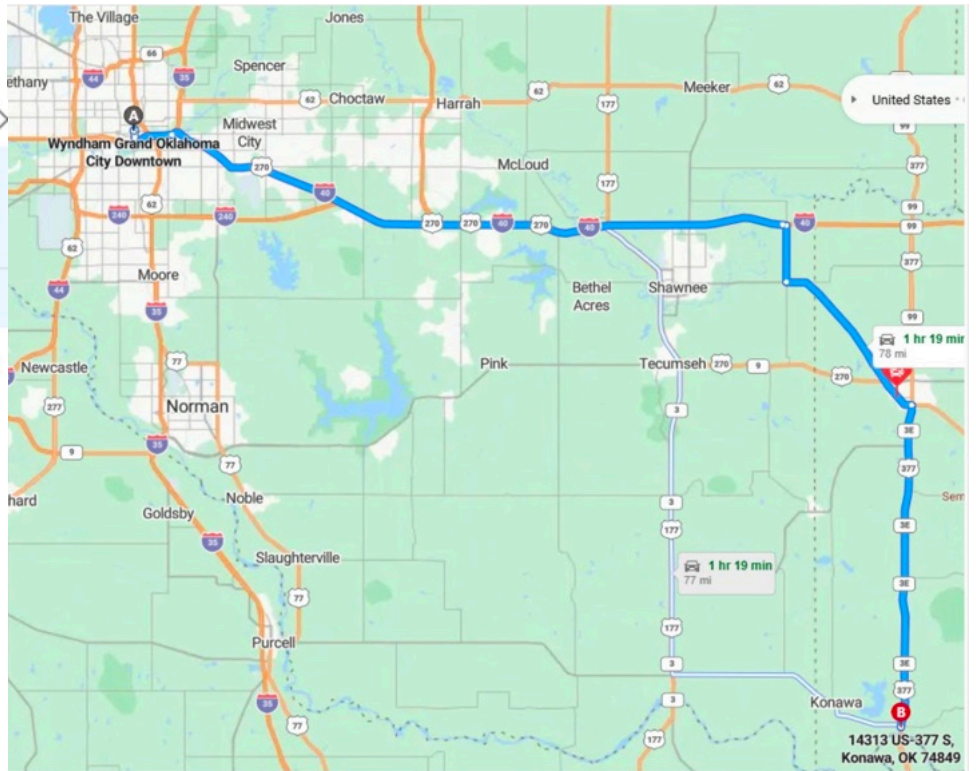
↶ Turn left onto N Walnut Ave

0.2 mi

Take the ramp on the right for I-235 S / US-77 S

0.8 mi

At Exit 1A, head left on the ramp for I-35 North / US-62 East / I-40 East toward Ft Smith / Wichita



1.5 mi

Keep left, heading toward Ft. Smith / Reno Ave / Scott St

27.9 mi

↘ At Exit 181, head right on the ramp for OK-3W / US-177 / US-270 toward Perkins / Stillwater

0.2 mi

↑ Keep right, heading toward Shawnee

29.3 mi

↶ Turn left onto OK-39 / Highway 39

15.3 mi

↘ Turn right onto US-377 S / OK-99 / OK-3E / Highway 99

0.2 mi

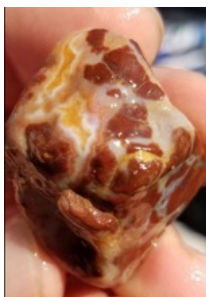
● Arrive at US-377 S / OK-99 / OK-3E / Highway 99

The last intersection before your destination is OK-39 / S Broadway St

**B** Rivermist Casino

Arrive by 9:31 AM

14313 Highway 99, Konawa, OK 74849-4013



## 2024 RMFMS Convention Schedule

DATE	TIME	SCHEDULE	LOCATION
10/24/2024 THURSDAY	12pm- 7pm	Exhibit Cases Set-up	Modern Living Bldg. - OKC Fairgrounds
	12pm- 7pm	Vendor Set-up	Modern Living Bldg. - OKC Fairgrounds
	3pm	Judge's Meeting	Modern Living Bldg. - OKC Fairgrounds
10/25/2024 FRIDAY	9am-12:45pm	Delegate Registration	Wyndham Grand -Lobby
	9am-6pm	Show Opens	Modern Living Bldg. – OKC Fairgrounds
	9am	Judging of competitive cases	Modern Living Bldg.
	1pm	Executive Meeting	Wyndham Grand - Argus meeting room
	1pm-6:30pm	Rose Rock Hunt	Lake Stanley Draper
10/26/2024 SATURDAY	8am -12pm	Field Trip: General Material Gravel Pit	Meet at location - 15800 S. MacArthur
	9am – 12pm	Field Trip: Behind-the-Scenes Tour of Vertebrates Paleontology	Sam Noble Museum in Norman (limited to 20)
	9am	Show Opens	Modern Living Bldg. - OKC Fairgrounds
	9am - 12:45pm	RMFMS Delegate Registration	Wyndham Grand - Lobby
	1pm	RMFMS Delegates Meeting	Wyndham Grand - Argus meeting room
	5pm	Show Closes	Modern Living Bldg. - OKC Fairgrounds
	5pm-6pm	Happy Hour	Bourbon Street Café
	6pm	Awards Banquet	Bourbon Street Café
10/27/2024 SUNDAY	8am -10am	Editor/Webmaster Breakfast & Meeting	IHOP - Bricktown
	10am – 2pm	Boley Agate Field Trip	Meet at Rivermist Casino, Konawa OK
	10am	Show Opens	Modern Living Bldg. - OKC Fairgrounds
	5pm	Exhibit Cases Released	Modern Living Bldg. - OKC Fairgrounds
	5pm	Show Closes	Modern Living Bldg. - OKC Fairgrounds

## I'm Going Up the Country to the Moon Anchor Mine with Maricopaite

Mike Nelson, [csrockguy@yahoo.com](mailto:csrockguy@yahoo.com), Colorado Springs Mineralogical Society



During the last couple of decades, I have spent a fair amount of time in Arizona enjoying the Tucson shows, the desert, spring baseball, great southwestern food, the rock exposures and mountains, and the lack of snow removal. When I had my RV, it was easy to travel and camp in many different localities around Tucson and Phoenix ranging from state parks to boondocking. We were always enamored with the County Parks (14 of them with several camping areas) in Maricopa County, the nearby Sonoran Desert National Monument, and the next-door (Pima County) Lost Dutchman State Park.

Maricopa County is a "really, really" large county (9,224 sq. mi.) that contains the 5<sup>th</sup> largest city in the U.S. (Phoenix), five Native American reserves, several mountain ranges and Wilderness Areas, and other federal and state protected areas. It seems like a "day trip" driving east-west across the county (132 miles) or north-south (103 miles).

A few years ago (Pandemic time) I decided to explore (day excursions) a couple of the Wilderness Areas in the western part of the County (no Covid bugs out there in the open spaces). By exploring, I really mean driving slowly to gaze at the Sonoran Desert (at this stage of my life I rarely venture far off the roads by myself). I slowly motored toward the Big Horn Mountains and Hummingbird Springs Wilderness Areas located west of Phoenix but still situated in Maricopa County. The intended journey was to traverse through Sonoran Desert National Monument located in the Maricopa Mountains southwest of Phoenix and then north and northwest over to the southern part of the Gila Bend and Painted Rock Mountains. So, with plenty of water

and food and a full tank of gas, off I went. I also left a detailed proposed itinerary with my spouse in Apache Junction and my brother in Tucson and a promise "not to do anything stupid."

One of Arizona's most famous mines is the Rowley, located in the northern part of the Painted Rock Mountains and a producer of magnificent blades of orange wulfenite (lead molybdate) and mimetite (lead arsenate chloride). Although commercial mining of copper, lead, and other mineral commodities ceased about a century ago, the mine is patented and has consistently produced specimen minerals since that time. MinDat lists 75 valid minerals including 13 Types and several varieties of uncommon lead minerals. Of course, the Mine is posted, and collectors must receive hard-to-obtain permission. From my point of view, that is OK since my claustrophobia does not allow explorations in mines or caves or small rooms or even large areas with crowds of people! But I could observe from a distance.



**Left:** Wulfenite tab crowded with hundreds of tiny acicular mimetite crystals. Width FOV ~7 mm. Rowley Mine. **Below right:** Wulfenite tabs associated with hexagonal barrel shaped mimetite crystals. Rowley Mine.



**Above:** Solitary crystal of wulfenite with out-of-focus mimetite crystals. Wulfenite crystal ~1mm in length. Rowley Mine.



continued on page 22

Moon Anchor Mine & Maricopaite — *continued from page 21*

Further north in the Desert are the joined Hummingbird Springs and Big Horn Mountains Wilderness Areas located in the Big Horn Mountains. Few trails seem to enter the mountains, and I was not about to get stranded or stuck in such a desolate area, but less than 60 miles from the 5<sup>th</sup> largest city in the U.S.!

A local rockhound I met at a Tucson show told me about an old lead-silver-gold mine, the Moon Anchor, located just to the east of the Wilderness Areas. He thought that perhaps the dump was still open to rockhounds with a chance to collect maricopaite. Named after Maricopa County and with a nifty name like the Moon Anchor (perhaps the author of the name had “accidentally” ingested some of the local Sacred Datura), who could resist a visit?



*Open saucer-size flower of the saucer of Sacred Datura, known to western ranchers as Jimson Weed. All parts of Datura plants contain dangerous levels of anticholinergic tropane alkaloids and may be fatal if ingested by humans, livestock, or pets. Public Domain*

So off I went but was unable to get my vehicle to the mine due to “washouts” in the trail. As previously stated, I did not want to get stranded since my knees would not allow a long walk-about as they might have endured in the past. But all was not lost as I was able to purchase a specimen of maricopaite [ $\text{Pb}_7\text{Ca}_2(\text{Si},\text{Al})_{48}\text{O}_{100-32}\text{H}_2\text{O}$ ] collected from the only known locality in the world--the Moon Anchor. Interestingly, maricopaite is a zeolite mineral, and according to MinDat, is the only known natural zeolite with lead as an essential cation. Under a scope the mineral appears as soft (~1.0--1.5 Mohs) sprays of translucent, white, acicular crystals, thin bundles of extremely elongate acicular crystals, and mats with admixed mimetite. This strange, rare, little mineral seems to

pair quite nicely with the sacred Datura and the saguaro cactus.



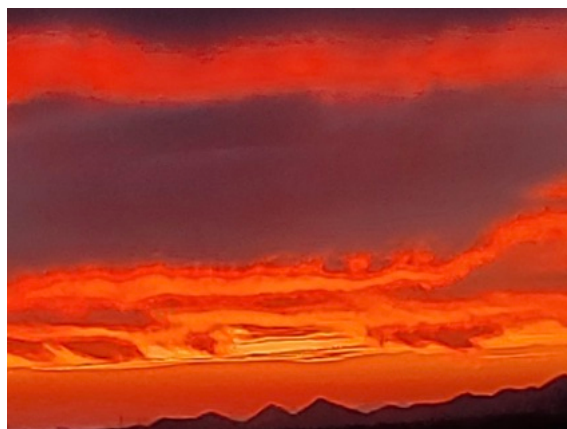
**Left:** Sprays and scattered individual maricopaite crystals. FOV ~1.8 cm.



**Right:** Sprays and sheaths of maricopaite crystals. FOV ~1.1 cm.

My little field excursion was a fantastic day in the desert. The scenery was amazing, my vehicle did not break down, I remained cognizant of my abilities and did not attempt to cross roadless arroyos or drive up funny looking hills. There was no cell service, but I had my topo maps, and my cool water in the jug tasted like wine—or maybe I was just dreaming about Canned Heat performing at Woodstock, August 1969:

*I'm goin' up the country, baby, don't you wanna go?  
I'm goin' to someplace where I've never been before  
I'm goin', I'm goin' where the water tastes like wine.*



*Sunset in the desert, or maybe I had tasted the Sacred Datura.*

## My Favorite Fossil Made Famous!!!

From Beth Simmons, DGMG

How many fossils do you know that make the headlines of the NY Times? None except maybe a *T-rex* or *Triceratops*. Certainly NOT an innocuous little trace fossil called *Bifungites*! Sue Hirschfeld sent me the link to an article by Priyanka Runwal in the Times on August 22, 2024, about the double-arrow trace fossil being found in Brazil, with the worm still inside!! What's the chance? And what's the story?



Fig. 1.

When I was a freshman at Allegheny College, I collected this specimen (**Figure 1**) near my cousin's farm in Eastern Erie County, PA. I took it to my paleontology professor at Allegheny, and he said it was a "*Bifungites*." I asked "What's that?" He said no one knew for

sure but they were supposed to be worm burrows. I then showed it to a friend in the Gem City Rock and Mineral Society, Richard Lamborn, and he took up the chase.

He found more samples near his home along Glenwood Parkway near its intersection with Gore Road, where the Girard shale outcrops in a road cut. The sample shown in **Figure 2** came from that location. Then Dick found more in the Meadville Shale—perfect double-ended arrows (**Figures 3 & 4** which show the vertical tubes. These specimens are now in Carnegie Museum in Pittsburgh.)



Fig. 2



Fig. 3



Fig. 4

With Professor Raymond Gutschick from Indiana University, Dick authored a number of articles about the strange creature who apparently had lost its way. The topic laid dormant for almost 40 years when, in 2002,

Brazilian paleontologists described very similar specimens from the Devonian Pimenterira formation in northeastern Brazil. In 2022, sharp-eyed Dr. Daniel Sedorko of Brazil's National Museum looked twice at specimens he found at that site in the Sambito River. Of the 190 specimens he examined, **inside at least eight traces were other fossil impressions—of segmented worms!! (Figures 5, 6a-d).**

The many authors who co-authored the recently published article "The trace fossil *Bifungites* and its tracemaker: A rare find!" in *Earth History and Biodiversity*, Vol. 1, Sept. 2024, attributed the worm impressions to *Annulitubus*,



Fig. 5



Annulitubus sp in shaft

a maldanid (or bamboo) worm, burrowing for protection from storms and predation in a shallow marine environment

(Figure 7). According to Wikipedia, modern species build tubes under rocks



Annulitubus sp in a chamber



Annulitubus sp in a chamber

Fig. 6a-d. *Annulitubus* impressions in shale from Brazil. (Sedorko, et al., fig. 4 a-d)

forming galleries in sand or mud at the bottom of estuaries. Just the finding of the worm impressions is outstanding and

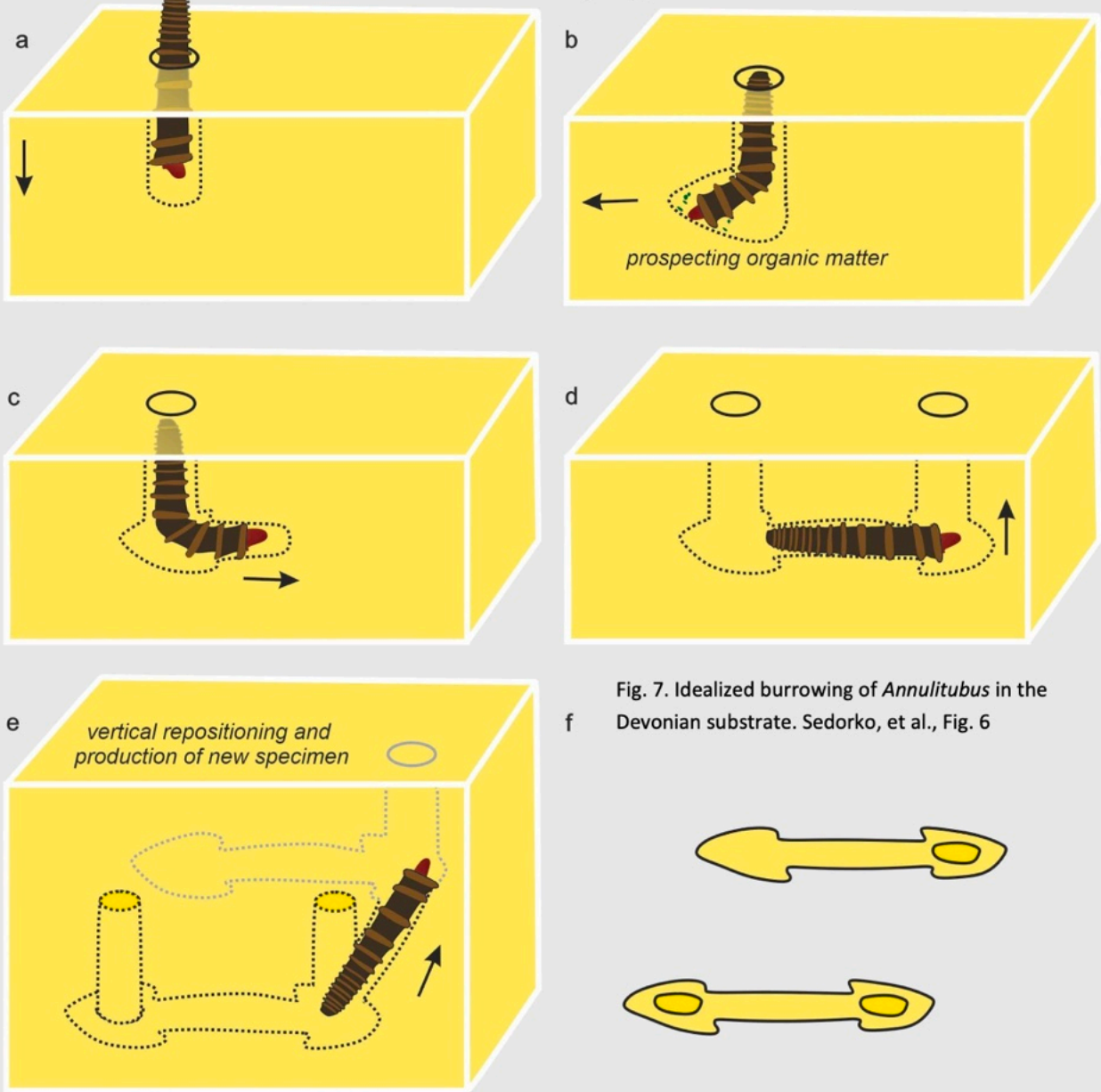
enlightening, but then to have their discovery be reported in a headline in the NY Times (Figure 5) elevates the little worms to the level of a discovery of a new dinosaur! And to think—this was the first important fossil I ever found!!! Now made famous!!!

Thanks to Sue Hirschfeld for forwarding the NY Times article!

continued on page 24

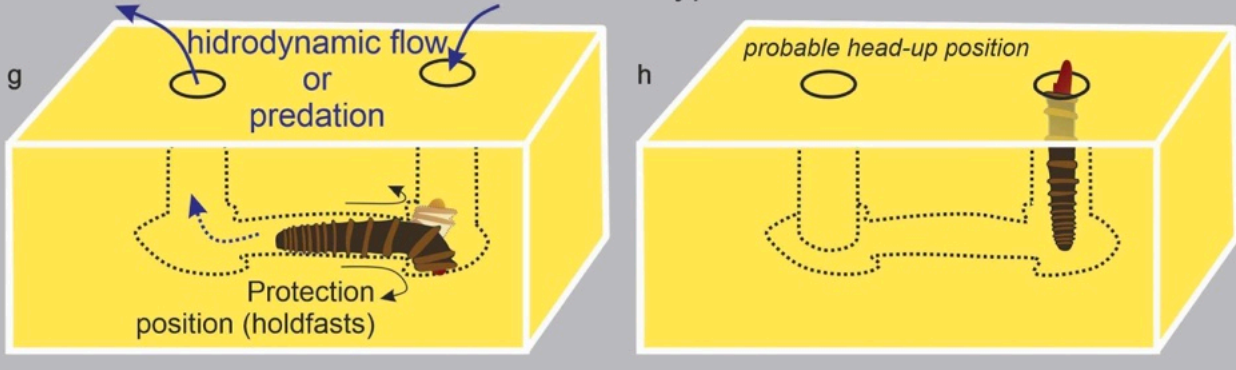
Fossil Made Famous— continued from page 23

### Detritus-feeding Hypothesis



See References on page 25.

### Protection Hypothesis





Fossil Made Famous — continued from page 24

**References:**

Agostinho, S., Viana, M.S.S., and Fernandez, A.C.Z., 2004, "Duas nova icnoespecies de *Bifungites* Desio, 1940 na Formachao Pimenteira, Devoniano da Bacia do Parnaiba," Bras. Ang. De Mus. Nov., V. 62, pp. 519-530.

Gutschick, Raymond and Lamborn, Dick, 1975, "*Bifungites*, trace fossils from Devonian-Mississippian rocks of Pennsylvania and Montana, U.S.A.," Palaeogeography, Palaeoclimatology, and Palaeoecology, V. 18, pp. 193- 212.

Rumval, Priyanka, Aug. 22, 2024, "These Fossils are Found all over, but what made them was a mystery," New York Times; [Bifungites Fossils Are Found All Over but What Made Them Was a Mystery - The New York Times \(nytimes.com\)](https://www.nytimes.com/2024/08/22/science/fossils-worms-bifungites-brazil.html)

Sedorko, Daniel, Rindsberg, Andrew K., Netto, Renata Guimardes, de Barros, Gabriel E. B., McDowell, Ronald R., Agostinho, Sonia, and Fernandes Antonio Carlos, Sept. 2024, "The trace fossil *Bifungites* and its tracemaker: A rare find!," Earth History and Biodiversity, Vol. 1.

The trace fossil *Bifungites* and its trace- maker: A rare find! - ScienceDirect

Wikipedia, Maldanid worms

Maldanidae - Wikipedia

**The New York Times** <https://www.nytimes.com/2024/08/22/science/fossils-worms-bifungites-brazil.html>


TRILOBITES


# These Fossils Are Found All Over, but What Made Them Was a Mystery

Scientists in Brazil identified marine worms that made at least some trace fossil burrows called Bifungites.

By Priyanka Runwal  
Aug. 22, 2024

Above: Headline from The New York Times





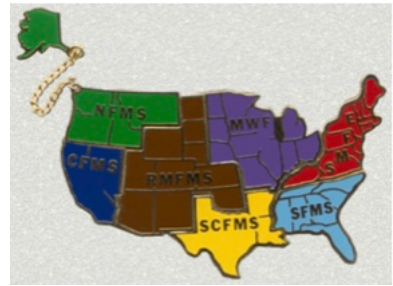
### Where in the RMFMS is Rocky?

- State Capitol, OK?
- State Capitol, CO?
- State Capitol, AZ?

Photo at left from 17989982421\_9e895d2738\_o.jpg, CC BY-NC-SA 2.0

Clipart at top by Phillip Martin. CC BY NC ND 3.0.

Answers on page 26.



## Upcoming Shows and Events

10/11-13/2024	Cache Rock & Gem Club Rock & Gem Show 2024	Cache County Fairgrounds Event Center, 450 S 500 W, Logan, UT	cacherockandgemclub.com
10/12-13/2024	50th Annual Huachuca Mineral, Gem, Jewelry and Fossil Show	The Mall at 2200 El Mercado Loop, Sierra Vista, AZ	Contact: Maudie Bailey, gmbailey@msn.com , 520.249.1541
10/12-13/2024	Topeka Gem & Mineral Society 67th Annual Show	Stormont Vail Event Agricultural Hall, 17th & Topeka, Topeka, KS	rock2plate@aol.com
10/19-20/2024	Rock Hounds 7th Annual Mineral, Gem, & Fossil Show	Campex Events Center, Equality Hall, Gillette, WY	Dennis Brown, 689-2228 or Dennis.Brown@CampbellCountyWY.gov
10/25-26/2024	50th Annual Gem & Mineral Show	Central Dakota Gem & Mineral Society, Bismarck Eagles Aerie 2237, 313 N 26th St, Bismarck, ND	Contact: Brenda Morgan, 701.202.8886 or Joe Martinetti 701.425.4450
10/25-27/2024	Oklahoma Mineral & Gem Society/RMFMS Convention	Modern Living Building, 608 Kiamichi Place, OKC Fairgrounds	omgs-minerals.org
11/30-12/1, 2024	Wickenburg Gem & Mineral Show	Hassayampa Elementary School, 251 South Tegner Street, Wickenburg, AZ	gemclub.info

If your club has show information that you would like to have listed in the *Rocky Mountain Federation News*, please email the information to the editor — <LJGRALG at aol.com>. As with many of the other email addresses in the newsletter, you will need to remove the chevrons, < >, and replace the spaces and the “at” with the correct symbol, @ .



### Where in the RMFMS is Rocky? — Answers

Linda Jaeger, Editor

We have clubs from 13 states in the RMFMS. Have you been there? Do you recognize the photos from the areas shown this month? **I would love for you to send a n awesome photo from your state with a caption and location to**

**print!** RMFMS has amazing country and activities to fill your senses.

Here are the answers for the photos on pages 3, 12, and 17:

- page 3: State Capitol - Oklahoma City, **Oklahoma**
- page 12: State Capitol - Phoenix, **Arizona**
- page 17: State Capitol - Denver, **Colorado**



Look for more beautiful locations next month from our member states: Arizona, Arkansas, Nebraska, New Mexico, Nevada, North Dakota, South Dakota, Texas, Utah, Wyoming.

Below are upcoming regional federation shows:

	California Federation	Eastern Federation	Midwest Federation	Northwest Federation	Rocky Mountain Federation	South Central Federation	Southeast Federation
2024	<b>AFMS/CFMS</b> Ventura, CA May 24-26	Sterling Hill Mine Ogdensburg, NJ June 8	East Peoria, IL August 24-25	Hermiston, OR May 10 - 12	Oklahoma City, OK Oct. 25 - 27	Mesquite, TX Nov. 23 - 24	Atlanta, GA Sept.27-29
2025		AFMS/EFMLS Hickory, NC March 27-30	Lincoln, NE April 5-6	Walla Walla, WA Sept. 12-14	Grand Junction, CO Sept. 19-21		
2026			St. Charles, IL May 23-24				



**50<sup>th</sup> ANNUAL HUACHUCA MINERAL, GEM,  
JEWELRY and FOSSIL SHOW**

**12th AND 13th, OCTOBER 2024**  
**THE MALL AT 2200 EL MERCADO LOOP, SIERRA VISTA, AZ**  
 For Information; Contact Maudie Bailey,  
[gmbailey@msn.com](mailto:gmbailey@msn.com), 520 249-1541

The Topeka Gem & Mineral Society  
**67<sup>th</sup> Annual Show**

\$1.00 Off

\$1.00 Off

**October 12 - 13, 2024**  
**Stormont Vail Event Agricultural Hall**  
**17th & Topeka, Topeka, Kansas**  
**\*CASH ONLY AT DOOR\***

<b>Admission</b>	<b>Hours</b>
Adult \$6.00 Student (13-17) \$2.00	Sat. – 10 am - 6 pm
Child under 13 with Adult – FREE	Sun. – 10 am – 5 pm
One Coupon Good For All Adults In Group	Email: <a href="mailto:rock2plate@aol.com">rock2plate@aol.com</a>



## OCTOBER ROCK & GEM SHOW 2024

ROCKS, MINERALS, FOSSILS, JEWELRY, DISPLAYS,  
 EDUCATIONAL EXHIBITS, SUPPLIES, VENDORS,  
 DOOR PRIZES, CONCESSIONS

CHILDREN'S ACTIVITIES:  
 WHEEL OF FORTUNE, MYSTERY BAGS,  
 AND GEM DIG

ADULTS \$3, FAMILY \$10, 12 AND UNDER FREE

**OCTOBER 11TH, 12TH AND 13TH**  
 FRIDAY & SATURDAY 10 AM TO 6 PM  
 SUNDAY 10 AM TO 5 PM

CACHE COUNTY FAIRGROUNDS EVENT CENTER  
 450 S 500 W, LOGAN, UTAH

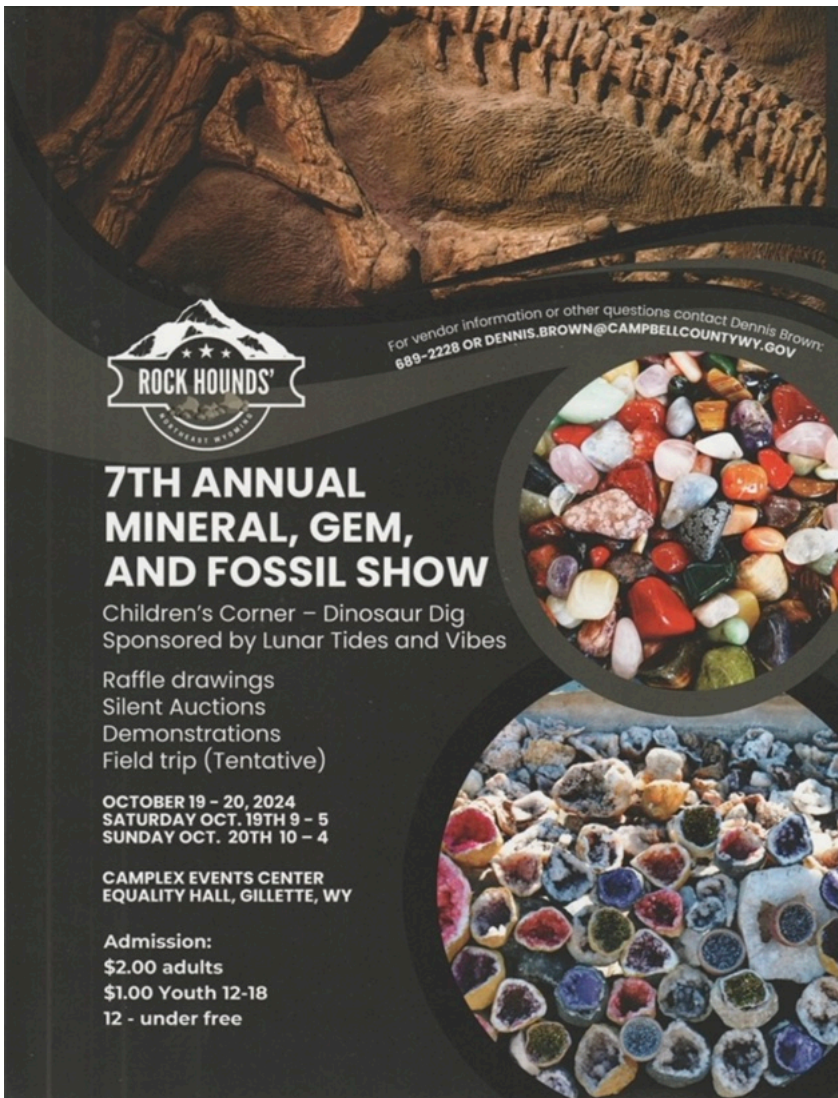
SPONSORED BY  






CACHE ROCK AND GEM CLUB GROUP  
[CACHEROCKANDGEMCLUB.COM](http://CACHEROCKANDGEMCLUB.COM)





For vendor information or other questions contact Dennis Brown:  
889-2228 OR DENNIS.BROWN@CAMPBELLCOUNTY.WY.GOV

**ROCK HOUNDS'**  
EAST WYOMING

## 7TH ANNUAL MINERAL, GEM, AND FOSSIL SHOW

Children's Corner – Dinosaur Dig  
Sponsored by Lunar Tides and Vibes

Raffle drawings  
Silent Auctions  
Demonstrations  
Field trip (Tentative)

OCTOBER 19 – 20, 2024  
SATURDAY OCT. 19TH 9 – 5  
SUNDAY OCT. 20TH 10 – 4

CAMPUS EVENTS CENTER  
EQUALITY HALL, GILLETTE, WY

Admission:  
\$2.00 adults  
\$1.00 Youth 12-18  
12 - under free

**Reminder:**

Advertise your Show in as many Free locations as possible!

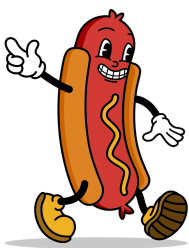
- Local newspapers
- Current events sections!
- Local TV stations
- Community Calendars
- Other local shows

**Advertise in the Rock & Gem Magazine!**

Send the information in early so it's published in the magazine as well as online:

[www.rockngem.com/showdate-submissions/](http://www.rockngem.com/showdate-submissions/)

Above from CFMS Newsletter, April 2024



---

## Hot Links – Editor's Picks

*Linda Jaeger, Editor*

---

Below are some hot links you might find interesting. Just click on the link — it will open the web page in your browser.

- **Looking for RMFMS/OMGS Convention info & registration forms:**

<https://www.rmfmts.org/general-clean>

- **Earthquakes can trigger quartz into forming giant gold nuggets, study finds:**

<https://www.livescience.com/planet-earth/geology/earthquakes-can-trigger-quartz-into-forming-giant-gold-nuggets-study-finds>

- **Weird 'zebra rock' on Mars is unlike anything seen before on Red Planet, NASA says**

<https://www.livescience.com/space/mars/weird-zebra-rock-on-mars-is-unlike-anything-seen-before-on-red-planet-nasa-says>

## 2024 Annual Mineral and Gem Show

### Oklahoma Mineral and Gem Society

Hosts the

### Rocky Mountain Federation of Mineralogical Societies Convention

---

**Modern Living Building**  
**OKC State Fair Park**  
**608 Kiamichi Place**  
**Oklahoma City, OK 73107**

**October 25th, 9-6**  
**October 26th, 9-6**  
**October 27th, 10-5**

**Daily Admission \$8**  
 Children under 12 free

**Show Features:**  
 Exhibits, Gemstones, Fossils, Earth Science Education, Tools, Rough Rock, Crystals, Fluorescent Room, Artisan Jewelry and Children's Activities

Oklahoma Mineral and Gem Society  
 omgs-minerals.org  
 See us on Facebook




**Barite Rose Rock**  
 Oklahoma State Rock



Oklahoma Mineral and Gem Society & Rocky Mountain Federation Conference  
 Oklahoma Barite Rose Rock Hunt

Presently Scheduled:  
 October 25, 2024  
 9:00 am – 1:00 pm  
 Lake Stanly Draper  
 Oklahoma City, OK

Potentially a 2 mile round trip walk. Bring a rock hammer, collecting bucket, comfortable shoes and drinking water. Keep in mind that barite gets heavy the more you collect! If the lake level is low, another site near the road may be available.

Oklahoma Mineral and Gem Society & Rocky Mountain Federation Conference  
 Sam Noble Museum in Norman, OK.  
 Private Behind-The-Scenes-Tour of the Vertebrate Paleontology Museum.




Curator Dr. Jacqueline Lungmus will lead the group through the research and storage rooms above the museum.

Presently Scheduled:  
 October 26<sup>th</sup>, 2024  
 10 am to 12:00 pm





### Oklahoma City Geological Society & Rocky Mountain Federation Conference

General Material Gravel Pit  
 Oklahoma City, OK  
 Presently Scheduled:  
 October 27, 2024  
 9:00 am to 12:00 pm



Find bison bones, Alibates Flint, aragonite, petrified wood and sometimes you will get lucky and find a mastodon tooth!




## 50TH ANNUAL GEM AND MINERAL SHOW

### CENTRAL DAKOTA GEM & MINERAL SOCIETY

Bismarck Eagles Aerie 2237  
 313 N 26th St, Bismarck, ND  
 Friday, October 25, 10-6 and Saturday, October 26, 10-5


**GRAND DOOR PRIZES FRIDAY AND SATURDAY!**



- VENDORS
- DISPLAYS
- KIDS ACTIVITY TABLE
- GRAB BAGS

- ROCK & MINERAL IDENTIFICATION
- FOSSILS
- EDUCATIONAL DEMONSTRATIONS
- FLUORESCENT DISPLAY


**Special guest speaker** *Dr. Allan Ashworth*



Ashworth's distinguished career has focused on paleoecology, stratigraphy and sedimentology, with a specialization in insects and how they respond to climate change. In his research, he discovered the only known fly and beetle fossils on Antarctica.

From <https://www.ndsu.edu/news/view/detail/55473>

Contact Show Co-Chairpersons  
 Brenda Morgan (701) 202-8886  
 Joe Martinetti (701) 425-4450



[www.ndrockclub.org](http://www.ndrockclub.org)

## Wickenburg Gem and Mineral Show

### Nov 30 Dec 1, 2024

Free Admission

gemclub.info




**Jewelry**

**Fossils**

**Minerals**

Over 40 Vendors    Best Rock Contest    Raffle  
 Door Prizes    Kid's Area    Silent Auction

Hassayampa Elementary School  
 251 South Tegner Street Wickenburg, AZ  
 9am - 5pm Saturday • 10am - 4pm Sunday

---

## 2024 Executive Committee – composed of the Officers & the State Directors

---

### Officers:

President	Bob Regner	<Rnregner at aol.com>
Vice President	Jim Gray	<jimgray at wyoming.com>
Secretary	Liz Thomas	<mygemsrock at gmail.com>
Treasurer	Gene Maggard	<gandpmaggard at gmail.com>
Historian	Cinda Kunkler	<cindakunkler at att.com>
Past President		
Past President	Richard Jaeger	<RjgrSci at aol.com>

### State Directors:

AZ/NV	Steve Kaminski	<scsckimin at gmail.com>
CO	Kathy Honda	<Kathrine.honda at ucden.edu>
KS	Brad Davenport	<brad7254 at gmail.com>
ND	Steve Fasching	<steve.fasching at gmail.com>
NM/TX		
OK/AR	Roberta Wagle	<waglemom at gmail.com>
SD/NE	Lori Loomis	<sdnestatedirector at gmail.com>
UT	Tracy Jensen	<tracyjensen0515 at gmail.com>
WY	Leane Gray	<lgray at wyoming.com>

**Please note:** All email addresses are enclosed in chevrons, < >, and the @ symbol has been replaced by the word "at" with a space before and after the word. This is to prevent bots from picking up our email addresses. You will need to remove the chevrons and replace the word "at" and the two spaces with the @ symbol to have the correct email.

## 2024 Committee Chairs

ACROY (AFMS Club Rockhound of the Year)	Chris Whitney-Smith	<ask.chrisws at yahoo.com>
All American Club	Roberta Wagle	<waglemom at gmail.com>
BEAC (Bulletin Editors Advisory Committee) & Bulletin Editors Contest	Linda Jaeger	<LJGRALG at aol.com>
Boundaries	DeLane Cox	<delanec3 at earthlink.net>
Convention Advisor	Liz Thomas	<mygemsrock at gmail.com>
Credentials	Roberta Wagle	<waglemom at yahoo.com>
Directory	Liz Thomas	<mygemsrock at gmail.com>
Editor of Newsletter	Linda Jaeger	<LJGRALG at aol.com>
Finance	Wayne Cox	<WayneC3 at earthlink.net>
Fluorescent Tech	Pete Modreski	<pmodreski at aol.com>
Fossils Tech	Patrick Rowe	<rowe_patrick at gmail.com>
Gold Pan Award	Richard Jaeger	<RjgrSci at aol.com>
Insurance	Gene Maggard	<gandpmaggard at gmail.com>
International Relations	Mike Nelson	<csrockguy at yahoo.com>
Juniors Program	Michelle Cauley	<michelle.cauley at dakotacollege.edu>
Lapidary Tech	vacant	
Long Range Planning	Liz Thomas	<mygemsrock at gmail.com>
Long Range Planning	Richard Jaeger	<RjgrSci at aol.com>
Long Range Planning	Judy Beck	<Lkbeckfam at gmail.com>
Mineralogical Tech	vacant	
Name Badges	Richard Jaeger	<RjgrSci at aol.com>
New Program Contest	Gene Maggard	<gandpmaggard at gmail.com>
Nominating Committee	Bob Regner	<Rnregner at aol.com>
Nominating Committee	Liz Thomas	<mygemsrock at gmail.com>
Nominating Committee	Richard Jaeger	<RjgrSci at aol.com>

*continued on next page*

## 2024 Committee Chairs – *continued*

Parliamentarian	Gene Maggard	<gandpmaggard at gmail.com>
PLAC - AZ	Dr. Alex Schauss	<Aschauss at arizona.edu>
PLAC - CO/NE/ND	Mike Nelson	<csrockguy at yahoo.com>
PLAC - KS	Jared Kyner	
PLAC - NM/TX	vacant	
PLAC - OK/AR	Stan Nowak	<snowak48 at yahoo.com>
PLAC - SD	Brandon Nelson	<nelson.bc80 at gmail.com>
PLAC - UT/NV	Jack Johnson	<j4x4jj at comcast.net>
PLAC - WY	Richard Gerow	<rgwizzard at wyoming.com>
President's Hat	all past presidents	
Program Library	Gene & Peggy Maggard	<gandpmaggard at gmail.com>
Public Relations	Brian Crocker	<brianrocktrips at gmail.com>
Resolutions		
Ribbons	Peggy Sue Moore	<moorepeggysue at gmail.com>
Safety	Jodi Brewster	<rmfmssafety2024@gmail.com>
Scholarship Committee	Richard Jaeger	<RjgrSci at aol.com>
Stationery/Trophies	Bennie Thomas	<myretirementrocks at gmail.com>
Supplies	Roberta Wagle	<waglemom at gmail.com>
Uniform Rules	Lee Whitebay	<lwhiteba at gmail.com>
Uniform Rules	Leon Reeder	<leonreeder47 at yahoo.com>
Uniform Rules	Les Presmyk	<presmyk at cox.net>
Webmaster	Dale Bright	<webmaster at rfmfs.org>
Website Contest	Jennifer Gerring	<jgerring at gmail.com>

**Please note:** All email addresses are enclosed in chevrons, < >, and the @ symbol has been replaced by the word "at" with a space before and after the word. This is to prevent bots from picking up our email addresses. You will need to remove the chevrons and replace the word "at" and the two spaces with the @ symbol to have the correct email.





## RMFMS Purpose & Policies – Excerpts from 2023 Directory (Revised)

- To bring about a closer association of the Earth Science Groups in the Rocky Mountain region.
- To increase and disseminate knowledge about minerals and other geologic materials.
- To encourage mineral study, collecting, and fashioning as a HOBBY.
- To sponsor local organizations interested in similar purposes.
- To encourage all clubs to publish bulletins and newsletters.
- To continue building up and promoting the use of the Federation Library of slide programs, videos, CDs, and DVDs to each member club.
- To distribute information and suggestions on the preparation and arrangement of specimens and materials for exhibit and display.
- To provide information and assistance to clubs holding Gem and Mineral Shows.
- To encourage clubs to support the American Federation of Mineralogical Societies Scholarship Foundation Fund.

### AFMS Code of Ethics

- I will respect both private and public property and will do no collecting on privately owned land without the owner's permission.
- I will keep informed on all laws, regulations or rules governing collecting on public lands and will observe them.
- I will, to the best of my ability, ascertain the boundary lines of property on which I plan to collect.
- I will use no firearms or blasting material in collecting areas.
- I will cause no willful damage to property of any kind—fences, signs, buildings.
- I will leave all gates as found. I will build fires in designated or safe places only and will be certain they are completely extinguished before leaving the area.
- I will discard no burning material—matches, cigarettes, etc.
- I will fill all excavation holes, which may be dangerous to livestock.
- I will not contaminate wells, creeks or other water supply.
- I will cause no willful damage to collecting material and will take home only what I can reasonably use.

- To promote the concept that all members of all clubs are members of the RMFMS and the AFMS, and to encourage individual members and clubs to take responsibility for asking questions or making known that help is needed. To encourage more contacts between those working at the Federation level, between clubs, and between club members.
- To keep the members informed of problems and activities regarding the use of Public Lands.
- To continue to support Federation-sponsored programs.

The Rocky Mountain Federation is composed of a membership of approximately 14,000 members in the following states: Arizona, Arkansas, Colorado, Kansas, Nebraska, New Mexico, Nevada, North Dakota, Oklahoma, South Dakota, Texas, Utah, and Wyoming.

The work of the Federation is directed by the Executive Committee, composed of: President, Vice-President, Secretary, Treasurer, Historian, State Directors, and the two immediate Past-Presidents.

**Reminder — next RMF Newsletter is the November 2024 issue. Deadline for articles is October 15, 2024.**

- I will practice conservation and undertake to utilize fully and well the materials I have collected and will recycle my surplus for the pleasure and benefit of others.
- I will support the rockhound project H.E.L.P. (Help Eliminate Litter Please) and will leave all collecting areas devoid of litter, regardless of how found.
- I will cooperate with field trip leaders and those in designated authority in all collecting areas.
- I will report to my club or Federation officers, Bureau of Land Management, or other authorities, any deposit of petrified wood or other materials on public lands which should be protected for the enjoyment of future generations for public educational and scientific purposes.
- I will appreciate and protect our heritage of natural resources.
- I will observe the "Golden Rule," will use "Good Outdoor Manners" and will at all times conduct myself in a manner which will add to the stature and public image of rockhounds everywhere.

